

NYC Scouting and Exploring

Creating Leaders
Changing Futures



LEADING THE WAY:

Putting NYC Kids on a Path to Success

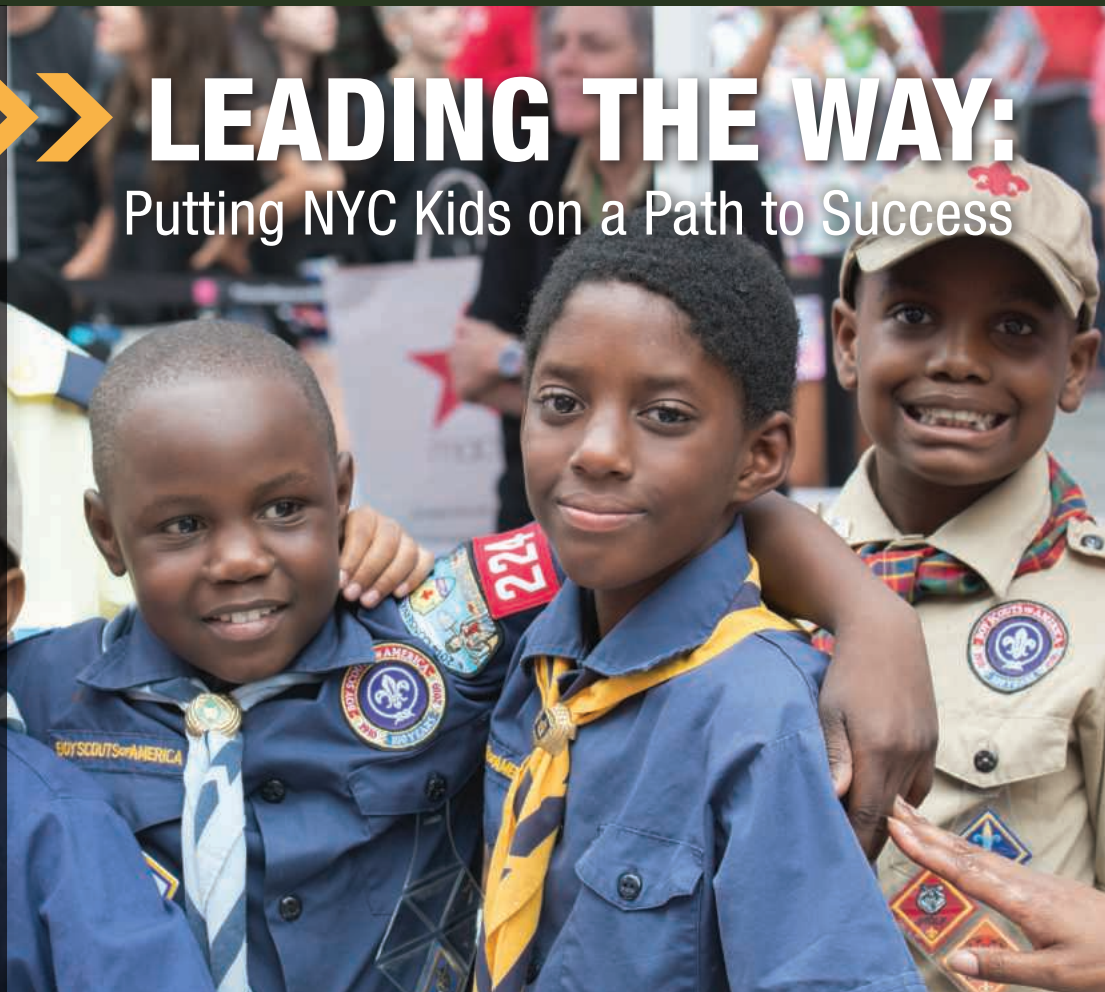
47,553
Members Served

126 Eagle
Scouts

784 Chartered Units

4,251 Adult
Leaders

75,947
Scouts and Leaders
Use New York Camps



There has never been a better time to get involved in Scouting. Visit www.bsa-gnyc.org to find out more.



BOY SCOUTS
OF AMERICA®
GREATER NEW
YORK COUNCILS





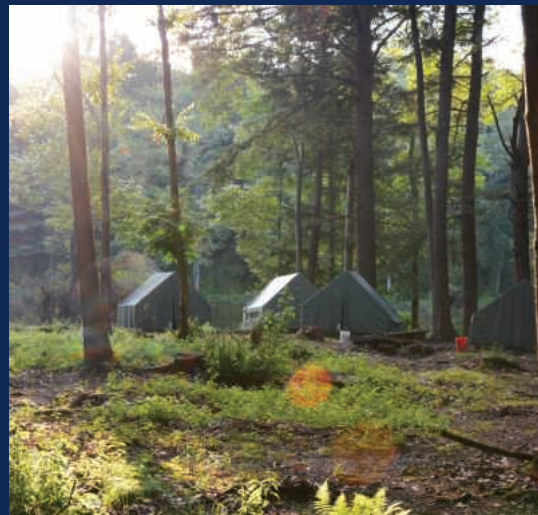
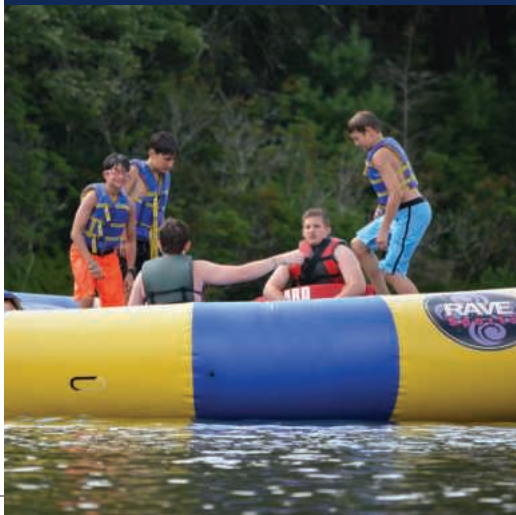
Leading the Way

Putting NYC Kids on a Path to Success

Scouting builds leaders. It teaches them to seek out challenges, and lead others in overcoming them.

The lessons youth learn in Scouting prepare them for their lifelong journey to improve themselves and their communities.

» **Prepared. For Life.™**



CONTENTS



Greetings from Key Leadership.....	2
NYC Scouting & Exploring At-A-Glance.....	3
Aims & Methods of Scouting	4
Program Highlights	5
Camp Improvement Highlights.....	6-7
Community-Based Program Partners	8-11
2015 Operating Budget	12
2015 Executive Committee.....	13
Board of Directors	14-15
Named Endowment Funds	16
In Memoriam	16
Tribute to John C. Whitehead	17
Major Contributors.....	18-25
James E. West Contributors	26-29



BOY SCOUTS OF AMERICA
GREATER NEW YORK COUNCILS

Greetings from our Key Volunteer Leaders

Dear Friend of Scouting,

Leadership development is one of the important ways we change lives through Scouting and Exploring. Through Cub Scouts, Boy Scouts, Scoutreach, Learning for Life, Venturing, and Exploring, young people learn how to make ethical decisions, bring people together, and take actions that can enhance the lives of those around them.

Scouting and Exploring foster leadership among thousands of NYC boys and girls throughout the year. Our programs offer many opportunities to learn and practice leadership so our young people can better themselves and their neighborhoods. Through 800 community-based programs with caring adult mentors, Scouts and Explorers learn to take personal responsibility, overcome challenges, and invest their time to strengthen our communities.

This has been a remarkable year for NYC Scouting and Exploring. As a Council, our board and stakeholders are delighted to report that under the volunteer leadership of Dr. Robert Gates, the national Scouting organization has brought about a membership policy for adults and youth without regard to sexual orientation, and we are thrilled that they are now aligned with our longstanding policies. We are proud of our Council's leadership in advocating for a fully inclusive national policy for adult staff and volunteers.

Together, by helping create our next generation of leaders, we can change the future of young people and make New York City a better place to live.

With gratitude and appreciation,



Chair

Alair A.
Townsend



President

Raymond
Quartararo



**Executive
and CEO**

Ethan V. Draddy



Commissioner

Anthony Fiori



**BOY SCOUTS
OF AMERICA**
GREATER NEW
YORK COUNCILS



We are
pleased to welcome
Richard G. Mason, Esq.
as our new Council President
as of February 2016

NYC Scouting and Exploring At-A-Glance

Our Mission: The Greater New York Councils, Boy Scouts of America has helped over five million young people become “Prepared for Life.” The mission of the Boy Scouts of America is to prepare young people to make ethical and moral choices. The vision of the Greater New York Councils is to serve kids and their families throughout the diverse communities of New York City and to help them to prepare for success in school, career, and life.

>> Community Served

47,553 boys and girls
ages 6-20 in the five boroughs
of New York City

>> Including

4,934 Cub Scouts

4,485 Boy Scouts

10,004 Cub Scouts served in
Scoutreach

20,291 Learning for Life Participants

7,619 Explorers

220 Venturers

>> Gender

66% male

34% female

>> Demographics

37% Hispanic

25% African-American

25% Caucasian

11% Asian

1% Other

1% Native American

>> Percentage of Youth Who Receive Financial Assistance

70%

>> Adult Volunteers

4,251

>> Number of Volunteer Hours Contributed

250,000+

>> Number of Chartered Unit Programs

784

>> Annual Operating Budget

\$11.5 million

>> Number of Summer Camp Sessions

7,584

>> Number of Scouts and Adults Participating in Weekend Activities at one of our Camping Properties

75,947, including:

Alpine Scout Camp: 35,560

William H. Pouch Scout Camp: 29,101

Ten Mile River Scout Reservation: 11,286

>> Direct Assistance to Individuals

\$759, 616 (not including subsidies to our programs)

>> Boy Scout Rank Advancements

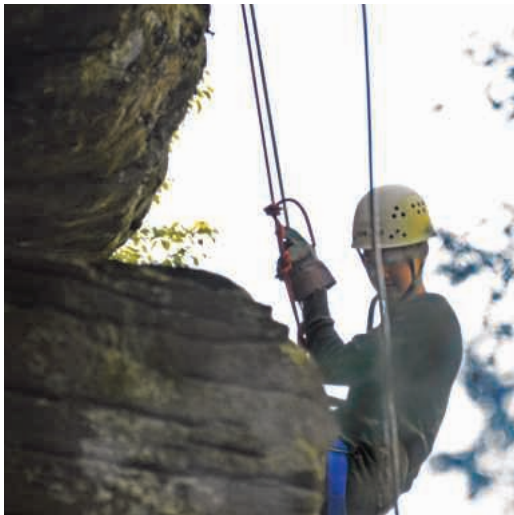
1,286

>> Cub Scout Rank Advancements

8,218

>> New Eagle Scouts

126



Aims & Methods of Scouting

The Scouting program has three specific objectives:

Character Development • Citizenship Training • Personal Fitness

The methods by which the aims are achieved are:

Ideals: The ideals of Boy Scouting are spelled out in the Scout Oath, the Scout Law, the Scout motto, and the Scout slogan.

Patrols: The patrol method gives Boy Scouts an experience in group living and participating citizenship. It places responsibility on young shoulders and teaches boys how to accept it.

Outdoor Programs: Boy Scouting is designed to take place outdoors. It is in the outdoor setting that Scouts share responsibilities and learn to live with one another.

Advancement: Boy Scouting provides a series of surmountable obstacles and steps in overcoming them through the advancement method.

Association with Adults: Boys learn a great deal by watching how adults conduct themselves. Scout leaders can be positive role models for the members of their troops.

Personal Growth: As Boy Scouts plan their activities and progress toward their goals, they experience personal growth. The Good Turn concept is a major part of the personal growth method of Boy Scouting. Boys grow as they participate in community service projects and do Good Turns for others.

Leadership Development: The Boy Scout program encourages boys to learn and practice leadership skills. Understanding the concepts of leadership helps a boy accept the leadership role of others and guides him toward the citizenship aim of Scouting.

Uniform: The uniform makes the Boy Scout troop visible as a force for good and creates a positive youth image in the community.

>> How Do You Lead?

"Becoming a leader in the Scoutreach Program was an easy decision, having been a Scout from the South Bronx and growing up in the same neighborhood I serve. These are the kids that would benefit the most from the Scouting program because it helps them develop character, gives them structure, and an outlet to their day to day life, and I know this for a fact because it did the same for me."

– Manuel Piedra, Field Specialist, Scoutreach Program



Program Highlights

We offer programs for boys and girls throughout the five boroughs ages 6-20:

Cub Scouts • Boy Scouts • Scoutreach • Exploring • Learning for Life • Venturing

This was an exciting year, with new programs and activities that inspired young people to challenge themselves and contribute to their communities. Here are just a few highlights:



World Championships

Pinewood Derby: This inaugural event was held June 27th at the “Cross-roads of the World,” Times Square, with Cub Scouts from near and far showcasing their skills, and over 650 Scouts, parents, and volunteers in attendance.



Law Enforcement Exploring: Last August 240 Explorers participated in our Law Enforcement Academy at Fordham University and at Camp Ke-owa. The New York Police Department held their annual graduation ceremony at One Police Plaza, hosted by Police Commissioner Bill Bratton.



Commissioner Bratton told our Explorers, “*you are the future of our city, indeed our state, and our nation. You are the best of the best and you can help to write the next chapter of policing in New York City.*”

Additionally, over 700 Explorers, Advisors, and supporters joined us at the annual Exploring Recognition Dinner at Marina del Rey in the Bronx, to recognize the achievements of Law Enforcement Explorers.

New Day Camps: Following our successful pilot program at the Bronx Zoo in 2014, this year we opened new borough day camps at Prospect Park Zoo, Queens Zoo, and the Central Park Zoo, in partnership with the Wildlife Conservation Society.



Career and STEM Days: An energy workshop at National Grid, a Career Day at Alliance Bernstein, and a new Merit Badge Pro-series of worksite-based tours and workshops hosted by companies in downtown Brooklyn are just a few of the expanded opportunities available for Scouts and Explorers to learn new skills from leading professionals in industry-leading and innovative NYC companies.



Scoutreach: GNYC piloted this program in 1989 to serve disadvantaged communities and we are proud that this outstanding Cub Scouting program has since been replicated nationally and continues its robust growth here in NYC.

Camp Improvements - *A Few Highlights*

Join the GNYC Camping Department each month for live, web-based communication, information sharing, and to give you the chance to ask questions to be ready for camp. Click on www.bsa-gnyc.org/webinar.

The following are some exciting camp improvement projects in 2015:

ALPINE SCOUT CAMP

A New Roof for the John C. Whitehead Dining Hall:

This building is critical to the year-round operations of the John E. Reeves Cub World and Reeves Training Center, providing over 33,000 meals to Scouts and Scouters last year. Other improvements included staining the interior.



Complete One Year-round Comfort Station: Comfort Stations serve all Scouts staying in John E. Reeves Cub World and many of the Scouts camping in Alpine on the weekends. Renovations include a new roof, hot water heaters, tile floors and walls, and more.

Air-Conditioning for Reeves Lodge: This summer air-conditioning was installed in the youth & adult training center.

Improved Trading Post: We expanded the Alpine Scout Camp Trading Post to offer Scout uniforms, advancement items, Scouting literature, camping equipment, and supplies to better serve our Scouts & Scouters.

These improvements were made possible by donations made by many of our closest Scouting supporters, which were matched .50 cents on the dollar through a generous grant by the Reeves Foundation.



WILLIAM H. POUCH SCOUT CAMP

All New KaBOOM! Playground: In total the 4,000 square foot playground was completed in just 8 hours of build time, with volunteers moving 66,420 cubic feet of safety surfacing to install the new area. We estimate the playground will serve thousands children in the community in years to come.

Beech Cabin Refurbished: Thanks to a \$50,000 gift from the Richmond County Savings Bank Foundation, Beech received a full renovation, which will benefit Scouts and Scouters year-round.

Scout Shop Renovation: We renovated and opened a Scout Shop at Pouch Scout Camp to better serve the Scouts, Scouters and their families.



TEN MILE RIVER SCOUT RESERVATION

Billy and Keith Johnson Program Center: Campers at Ten Mile River's Camp Aquehonga will benefit from this brand-new building. The Scout Center will house a Leader's Lounge, Meeting/Training room, Camp Offices, Commissary, and Staff Kitchen. This new Scout Center was made possible by a generous \$500,000 grant from the NY Jets owner Woody Johnson.

New Skeet Range at Ten Mile River: This was created thanks to a National Order of the Arrow grant and an Order of the Arrow Kintecoying Lodge donation.

Other Projects: Additionally, we are very grateful to the ongoing generosity of the Rudin family, whose support enabled us to conduct several projects this year at Ten Mile River, including the purchase of campsite equipment and tents. We also re-roofed and rebuilt the front porch on Gottesman Communications Center at Camp Keowa.



Community-Based Program Partners *for Scouting and Exploring*

A Group Of Citizens Of New Dorp Inc, Staten Island
Academy of the City, Woodside
Active U, Rockaway
American Legion Continental Post 1424, Breezy Point
American Management Association , Manhattan
Amtrak Police Department, Manhattan
Archimedes Academy, Bronx
Bethany Baptist Church, Brooklyn
Beth-El Jewish Center of Flatbush, Brooklyn
Bethlehem Lutheran Church, Brooklyn
Blessed Sacrament Church, Brooklyn
Blessed Sacrament School, Bronx
Blessed Virgin Mary Help of Christians, Woodside
Boulevard Gardens, Woodside
Breukelen Residents Association, Brooklyn
Broadway Presbyterian Church, Manhattan
Bronx Development & Enrichment Initiative, Bronx
Brookdale University Hospital Medical Center, Brooklyn
Brooklyn Chinese American Association, Brooklyn
Brooklyn Dreams Charter School, Brooklyn
Brooklyn Excelsior Charter School, Brooklyn
Brown Memorial Baptist Church, Brooklyn
Calvary Baptist Church, Jamaica
Calvary Presbyterian Church, Staten Island
Capital One Bank, Brooklyn
Castleton Hill Moravian Church, Staten Island
Challenge Preparatory School, Far Rockaway
Christ Church, Bronx
Christ Church New Brighton, Staten Island
Church in the Gardens, Forest Hills
Church of Saint Anastasia, Douglaston
Church of Saint Andrew, Staten Island
Church Of St Anastasia, Douglaston
Church of St Mark, Brooklyn
Church of St Patrick, Staten Island
Church of St Roch, Staten Island
Church of St. Rita, Staten Island
Church Of The Epiphany, Manhattan
Church Of The Good Shepherd, Manhattan
Church of The Master, Bronx
Church of The Master, Manhattan
Colonial Rifle & Pistol Club, Staten Island
Community Worship Center Nazarene Church, Brooklyn
Concerned Parents Of Great Kills, Staten Island
Conron Camp Foundation Inc, Bellerose
Consolidated Edison, Manhattan
Cornerstone Baptist Church, Brooklyn
Country Pro Shop, Staten Island
Crawford Memorial United Methodist Church, Bronx
Credit Suisse First Boston, Manhattan
Crowne Plaza Times Square, Manhattan
CS 150, Bronx

Cultural Arts Academy Charter School, Brooklyn
CUNY TV, Manalapan
Dads Club of Troop One Flushing Inc, College Point
Denihan Hospitality Group, Hartsdale
Dewberry Engineers Inc, Manhattan
Divine Mercy Parish, Brooklyn
Double Tree Suites, Manhattan
Drug Enforcement Administration, Manhattan
Early Childhood School, Bronx
Eastchester Presbyterian Church, Bronx
Electchester Parents Assoc, Queens Village
Elem School for Math, Science & Technology, Bronx
Eltingville Lutheran Church, Staten Island
Epiphany Roman Catholic Church, Manhattan
Evan. Lutheran Church of The Redeemer, Queens Village
F.J. Sciame Construction Co. Inc., Manhattan
FDNY Exploring, Manhattan
Federal Bureau of Investigation, Manhattan
Fire Department of the City of New York, Manhattan
First Baptist Church of Crown Heights, Brooklyn
First Lutheran Church Of Throggs Neck, Bronx
First Presbyterian Church, Jamaica
Fitzpatrick Hotel Group, Manhattan
Floyd Bennett Post 1060 American Legion, Brooklyn
Flushing Greens, Flushing
Fort Washington Collegiate Church, Manhattan
Francis Lewis High School, Hicksville
Friends of Troop 279, Bronx
Friends of Pack 3600, Manhattan
Friends of Troop Public School 57-M, Manhattan
Ft. Washington Collegiate Church, Manhattan
George Bristow, Bronx
Gerstein Fisher, Queens
Gilbane Building Company, Manhattan
Gina Gibney Dance Inc, Manhattan
Grassi & Company, Queens
Great Performances, Manhattan
Greenpoint Reformed Church, Brooklyn
Group of American Citizens of Troop 310, Queens
Group Of Citizens Of New Dorp, Staten Island
Harlem Temple The Salvation Army, Manhattan
Harmony Lodge 709 - Knights of Pythias, Brooklyn
Hellenic Orthodox Community Of Astoria, Stewart Manor
Herbert H. Lehman High School, Long Island City
Hilton Garden Inn Central Park South, Manhattan
HNTB Corporation, Manhattan
Holy Child Jesus Roman Catholic Church, Richmond Hill
Holy Child of Jesus Catholic Academy, Richmond Hill
Holy Child R C Church, Staten Island

Holy Cross Greek Orthodox Church, Brooklyn
Holy Family Roman Catholic Church, Fresh Meadows
Holy Name Of Jesus Roman Catholic Church, Brooklyn
Holy Trinity Church, Manhattan
Holy Trinity Lutheran Church, Brooklyn
Imagine Me Leadership Charter School, Brooklyn
Immaculate Conception Church, Manhattan
Immaculate Heart of Mary Church, Brooklyn
Immanuel Lutheran Church, Staten Island
Immanuel Union Church, Staten Island
International Buddhist Progress Society, Flushing
Jamaica Hospital Medical Center, Brooklyn
John Adams High School, Springfield Gardens
Joseph J Rosen Memorial, Inc, Staten Island
Kew Gardens Hills Civic Association, Flushing
Kings County District Attorneys Office, Brooklyn
Kingsbrook Jewish Medical Center, Brooklyn
Kipp Star College Prep Charter School, Manhattan
Latvian Evangelical Lutheran Ch Of N Y, Manhattan
LDS Dyker Heights 1st Ward/Brooklyn Stake, Brooklyn
LDS Harlem 1st Ward/New York Stake, Manhattan
LDS Harlem 2nd Ward/New York Stake, Manhattan
LDS Inwood 1st Ward/New York Stake, Manhattan
LDS Kingsbridge #1 Ward/Westchester-NY Stake, Bronx
LDS Kingsbridge 2nd Ward/Westchester-Bronx Stake, Bronx
LDS Manhattan 1st Ward/New York Stake, Manhattan
LDS Manhattan 2nd Ward/New York Stake, Manhattan
LDS Manhattan 3rd Ward/New York Stake, Manhattan
LDS Olmstead #2 Ward/Westchester-NY Stake, Bronx
LDS Queens Stake, Sunnyside
LDS Staten Island 3rd Ward/Brooklyn NY Stake, Staten Island
LDS Union Square 1st Ward/New York Stake, Manhattan
Lincoln Hospital, Bronx
Linden Tree Elementary, Bronx
Loews Corporation, Spring Valley
Maimonides Medical Center, Brooklyn
Mary Queen of Heaven Roman Catholic Church, Brooklyn
Masjid Malcolm Shabazz, Manhattan
Messiah Lutheran Church, Staten Island
Metropolitan Community United Methodist Church, Manhattan

Community-Based Program Partners

for Scouting and Exploring

Metropolitan Fire Association, Staten Island
 Metropolitan Lighthouse Academy, Bronx
 Most Precious Blood Roman Catholic Church, Long Island City
 Mount Hope Masjid, Bronx
 MTA Police Department, Richmond Hill
 MTA Police Northern Region, Manhattan
 Muslim American Society, Staten Island
 Neuman's Kitchen, Manhattan
 New Covenant Church Of Christ, Queens Village
 New Jerusalem Baptist, Cambria Heights
 New Life Fellowship Church, Elmhurst
 New Utrecht Reformed Church, Brooklyn
 New York Hilton Midtown, Manhattan
 New York Mosaic Church, Fresh Meadows
 NSLIJ Health System - Lenox Hill Hospital, Brooklyn
 NYC Academy of Discovery, Woodhaven
 NYP SSD BN, Brooklyn
 NYPD 10 th Precinct, Manhattan
 NYPD 100th Precinct, Rockaway Beach
 NYPD 101th Precinct, Far Rockaway
 NYPD 102nd Precinct, Richmond Hill
 NYPD 103rd Precinct, Jamaica
 NYPD 104th Precinct, Ridgewood
 NYPD 106th Precinct, Ozone Park
 NYPD 107th Precinct, Fresh Meadows
 NYPD 108th Precinct, Long Island City
 NYPD 109th Precinct, Forest Hills
 NYPD 110th Precinct, Elmhurst
 NYPD 113th Precinct, Jamaica
 NYPD 114th Precinct, Astoria
 NYPD 120th Precinct, Staten Island
 NYPD 121st Precinct, Staten Island
 NYPD 123rd Precinct, Staten Island
 NYPD 13th Precinct, Manhattan
 NYPD 17th Precinct, Manhattan
 NYPD 19th Precinct, Manhattan
 NYPD 20th Precinct, Manhattan
 NYPD 23rd Precinct, Manhattan
 NYPD 24th Precinct, Manhattan
 NYPD 25th Precinct, Manhattan
 NYPD 26th Precinct, Brooklyn
 NYPD 28th Precinct, Manhattan
 NYPD 30th Precinct, Manhattan
 NYPD 32nd Precinct, Manhattan
 NYPD 34th Precinct, Manhattan
 NYPD 40th Precinct, Bronx
 NYPD 41st Precinct, Bronx
 NYPD 43rd Precinct, Bronx
 NYPD 46th Precinct, Bronx
 NYPD 49th Precinct, Bronx
 NYPD 50th Precinct, Brooklyn
 NYPD 52nd Precinct, Manhattan
 NYPD 5th Precinct, Manhattan
 NYPD 60th Precinct, Brooklyn

NYPD 61st Precinct, Brooklyn
 NYPD 62nd Precinct, Brooklyn
 NYPD 66TH PRECINCT, Brooklyn
 NYPD 67th Precinct, Brooklyn
 NYPD 68th Precinct, Brooklyn
 NYPD 69th Precinct, Brooklyn
 NYPD 6th Precinct, Manhattan
 NYPD 70th Precinct, Brooklyn
 NYPD 71st Precinct, Brooklyn
 NYPD 72nd Precinct, Brooklyn
 NYPD 73 Precinct, Brooklyn
 NYPD 75th Precinct, Brooklyn
 NYPD 76th Precinct, Brooklyn
 NYPD 77th Precinct, Brooklyn
 NYPD 79th Precinct, Brooklyn
 NYPD 84th Precinct, Brooklyn
 NYPD 88th Precinct, Brooklyn
 NYPD 90th Precinct, Brooklyn
 NYPD 94th Precinct, Brooklyn
 NYPD 9th Precinct, Manhattan
 NYPD Campus Magnet, Cambria Heights
 NYPD Cobble Hill High School, Brooklyn
 NYPD Flushing High School, Long Island City
 NYPD Housing Bureau - PSA 6, Manhattan
 NYPD Midtown North, Manhattan
 NYPD Police Academy, Manhattan
 NYPD PSA #5, Manhattan
 NYPD PSA 8, Bronx
 NYPD PSA-1, Brooklyn
 NYPD PSA-3, Brooklyn
 NYPD PSA-4, Brooklyn
 NYPD PSA-7, Bronx
 NYPD PSA-8, Bronx
 NYPD PSA-9, Flushing
 NYPD School Safety - Brooklyn North, Brooklyn
 NYPD School Safety Arts & Bus High School, Long Island City
 NYPD School Safety BN - IS 218, Brooklyn
 NYPD School Safety Bronx East, Bronx
 NYPD School Safety Bronx West, Bronx
 NYPD School Safety Brooklyn South, Brooklyn
 NYPD School Safety BXW CSSJ, Long Island City
 NYPD School Safety Div QS, Springfield Gardens
 NYPD School Safety Division-Queens South, Springfield Gardens
 NYPD School Safety Explorer Club 3886, Springfield Gardens
 NYPD School Safety Grover Cleveland High School, Long Island City
 NYPD School Safety Manhattan South, Manhattan
 NYPD School Safety Queens, Springfield Gardens
 NYPD School Safety Queens -Benjamin Cardozo HS, Manhattan
 NYPD School Safety Queens- LIC HS, Long

Island City
 NYPD School Safety Queens North, Long Island City
 NYPD School Safety Queens North Aviation HS, Long Island City
 NYPD School Safety Queens South, Springfield Gardens
 NYPD School Safety Soundview HS, Bronx
 NYPD School Safety Staten Island, Brooklyn
 NYPD School Safety Tilden Campus, Brooklyn
 NYPD School Safety-Far Rockaway Campus, Springfield Gardens
 NYPD Transit Division -32, Brooklyn
 NYPD Transit Division -34, Brooklyn
 NYPD Transit Division-04, Brooklyn
 NYPD Transit Division-11, Bronx
 NYPD Transit Division-12, Bronx
 NYPD Transit Division-20, Jamaica
 NYPD Transit Division-23, Rockaway Park
 NYPD Transit Division-33, Brooklyn
 NYU Hospital Center, Manhattan
 Oakwood Heights Community Congregational Church, Staten Island
 Office of The Special Narcotics Prosecutor, Manhattan
 Our Lady Help Of Christians, Brooklyn
 Our Lady Of Angels Roman Catholic Church, Brooklyn
 Our Lady of Assumption RC Church, Bronx
 Our Lady Of Christians Church, Brooklyn
 Our Lady of Good Counsel Parish, Staten Island
 Our Lady Of Grace Roman Catholic Church, Brooklyn
 Our Lady of Grace School, Bronx
 Our Lady of Guadalupe Church, Brooklyn
 Our Lady of Hope School, Maspeth
 Our Lady Of Mercy Roman Catholic Church, Forest Hills
 Our Lady of Mercy School, Forest Hills
 Our Lady of Miraculous Medal, Ridgewood
 Our Lady of Mt Carmel St Benedicta School, Staten Island
 Our Lady Of Perpetual Help Catholic, Brooklyn
 Our Lady of Perpetual Help Catholic Academy, South Ozone Park
 Our Lady of Pompeii, Manhattan
 Our Lady of Refuge Catholic Church, Brooklyn
 Our Lady of Sorrows RC Church & School, Corona
 Our Lady of the Assumption RC Church, Bronx
 Our Lady of the Snows School, Floral Park
 Our Lady of Trust CA, Brooklyn
 Our Lady Queen of Martyrs School, Forest Hills
 Our Lady Star of The Sea , Staten Island
 Our Ladys Catholic Academy, South Ozone Park
 Parent Association of PS 126, Bronx

Community-Based Program Partners *for Scouting and Exploring*

Parent Teachers Association Of Ps 207, Howard Beach
Parents Assoc Of Electchester Scouting, Fresh Meadows
Parents Association of PS 224, Brooklyn
Pelham Cornerstone of Mosholu Montefiore Community Ctr, Bronx
Penguin Random House, Manhattan
Perkins Eastman Architects, Brooklyn
Pioneer Academy, Brooklyn
Pioneer Academy, Queens
Port Authority of New York & New Jersey, Milford
Presbyterian Church St Albans, Saint Albans
PriceWaterhouse Coopers, Manhattan
Primeview USA, Manhattan
Project New Ground Inc, Brooklyn
Project Sail Inc. & Church of the Incarnation, Manhattan
Public School 102, Queens
Public School 103, Bronx
Public School 106, Bronx
Public School 109, Brooklyn
Public School 109, Brooklyn
Public School 112, Queens
Public School 128, Manhattan
Public School 130, Bronx
Public School 130, Bronx
Public School 132, Queens
Public School 134, Bronx
Public School 135, Brooklyn
Public School 14, Queens
Public School 143, Queens
Public School 150, Bronx
Public School 155, Brooklyn
Public School 156, Laurelton
Public School 158, Brooklyn
Public School 160, Bronx
Public School 161, Brooklyn
Public School 161, Bronx
Public School 161, Manhattan
Public School 166, Queens
Public School 169, Brooklyn
Public School 171, Brooklyn
Public School 171, Manhattan
Public School 173, Manhattan
Public School 179, Brooklyn
Public School 18, Bronx
Public School 18, Brooklyn
Public School 181, Brooklyn
Public School 182, Bronx
Public School 184, Brooklyn
Public School 189, Brooklyn
Public School 20, Bronx
Public School 20, Staten Island
Public School 205, Bronx
Public School 205, Brooklyn

Public School 21, Bronx
Public School 21, Brooklyn
Public School 21, Queens
Public School 213, Brooklyn
Public School 218, Bronx
Public School 219, Brooklyn
Public School 220, Queens
Public School 228, Queens
Public School 229, Queens
Public School 235, Brooklyn
Public School 241, Brooklyn
Public School 260, Brooklyn
Public School 270, Laurelton
Public School 279, Bronx
Public School 279, Flushing
Public School 280, Queens
Public School 30, Bronx
Public School 306, Bronx
Public School 315, Brooklyn
Public School 327, Brooklyn
Public School 33, Bronx
Public School 333, Bronx
Public School 35, Bronx
Public School 36, Bronx
Public School 37, Staten Island
Public School 384, Brooklyn
Public School 39, Staten Island
Public School 394, Brooklyn
Public School 41, Brooklyn
Public School 44, Staten Island
Public School 45, Brooklyn
Public School 46, Bronx
Public School 47, Bronx
Public School 48, Bronx
Public School 49, Bronx
Public School 53, Bronx
Public School 54, Bronx
Public School 57, Manhattan
Public School 59, Bronx
Public School 6, Brooklyn
Public School 75, Manhattan
Public School 76, Bronx
Public School 78, Staten Island
Public School 81, Bronx
Public School 89, Queens
Public School 91, Brooklyn
Public School 93, Bronx
Public School 94, Bronx
Public School 95, Brooklyn
Public School 95, Queens
Public School 95, Jamaica
Public School 97, Queens
Queen of the Rosary Catholic Academy, Brooklyn
Queens District Attorney's Office, Kew Gardens
Regina Pacis Roman Catholic Church, Brooklyn
Resurrection Ascension School, Rego Park

Resurrection Roman Catholic Church, Brooklyn
Richmond County District Attorney, Staten Island
Richmond University Medical Center, Staten Island
Riverdale Avenue Community School, Brooklyn
Riverdale Presbyterian Church, Bronx
Rochdale Village Social Services Inc, Saint Albans
Rockaway Artist Alliance, Rockaway Park
Rockaway Artists Alliance, Rockaway Park
Rush Temple Methodist Church, Roosevelt
Rutgers Presbyterian Church, Manhattan
Sacred Heart and St Stephen RC Church, Brooklyn
Sacred Heart Catholic Academy, Cambria Heights
Sacred Heart R C Church, Glendale
Sacred Heart RC Church, Staten Island
Sacred Heart Roman Catholic Church, Bayside
Sacred Heart Roman Catholic Church, Cambria Heights
Sacred Heart Roman Catholic Church, Glendale
Sacred Heart Roman Catholic Church, Staten Island
Saint Brendan Roman Catholic Church, Brooklyn
Saint Francis Xavier RC, Brooklyn
Saint Kevins RC Church, Flushing
Saint Leo Catholic Academy, Queens
Saint Saviour R.C. Church, Brooklyn
Saint Teresa's Roman Catholic Church, Staten Island
Saints Philip & James Church Rc, Bronx
Salem United Methodist Church, Manhattan
Salve Regina Catholic Academy, Brooklyn
School for Environmental Citizenship, Bronx
School Safety Club 2242, Jamaica
Shad Creek Association, Broad Channel
Sheridan Academy, Bronx
Signature Theatre, Manhattan
Silvercup Studios, Long Island City
Smart Technologies, Manhattan
South Beach Civic Association, Staten Island
St Adalbert RC School, Maspeth
St Adalbert School, Staten Island
St Agathas Roman Catholic Church, Brooklyn
St Augustine Episcopal Church, Brooklyn
St Barnabas Lutheran Church, Howard Beach
St Barnabas Roman Catholic Church, Bronx
St Bernards Roman Catholic Church, Brooklyn
St Brigid Catholic Academy, Brooklyn
St Camillus Catholic Academy, Rockaway Park
St Catherine of Genoa RCC, Brooklyn
St Charles Borromeo School, Manhattan
St Christopher Roman Catholic Church,

Community-Based Program Partners *for Scouting and Exploring*

Staten Island
St Clare of Assisi RC Church, Bronx
St Clare Roman Catholic Church, Staten Island
St Clares Of Assisi Roman Catholic, Bronx
St Edmund Roman Catholic Church, Brooklyn
St Frances Cabrini Catholic Academy, Brooklyn
St Frances de Chantal, Bronx
St Francis Xavier Roman Catholic Church, Brooklyn
St Francis Xavier School, Brooklyn
St Gabriel's Church, Brooklyn
St Georges Episcopal Church, Brooklyn
St Gregory The Great Catholic Academy, Brooklyn
St Helena Roman Catholic Church, Bronx
St Helens Roman Catholic Church, Howard Beach
St Johns Episcopal Church, Staten Island
St Johns Lutheran Church, Brooklyn
St Joseph St Thomas Roman Catholic Church, Staten Island
St Joseph The Worker Catholic School, Brooklyn
St Leo School, Corona
St Luke School, Bronx
St Lukes Roman Catholic Church, Whitestone
St Lukes School, Bronx
St Margaret Roman Catholic Church, Middle Village
St Mark The Evangelist School, Manhattan
St Marks Episcopal Church, Jackson Heights
St Matthias Roman Catholic Church, Ridgewood
St Michaels Church, Flushing
St Nicholas Greek Orthodox Church, Flushing
St Nicholas Of Tolentine RCC, Jamaica
St Pancras R C Church, Glendale
St Patrick Catholic Academy, Brooklyn
St Patricks RC Church, Brooklyn
St Pauls Catholic Church, Brooklyn
St Pauls Episcopal Church, Brooklyn
St Philips Episcopal Church, Brooklyn
St Raymond's Elementary School, Bronx
St Roberts Bellarmine Catholic Church, Bay-side Hills
St Sebastian, Woodside
St Stanislaus & Nativity Bvm, Ozone Park
St Stanislaus of Kostka Holy Name, Maspeth
St Sylvesters Roman Catholic Church, Staten Island
St Teresa Roman Catholic Church, Woodside
St Teresas Church, Staten Island
St. Anselms Roman Catholic Church, Brooklyn
St. Athanasius Roman Catholic Church, Belle Harbor
St. Barnabas Roman Catholic Church, Bronx
St. Bernards Church, Brooklyn
St. Charles Borromeo R.C.Church, Brooklyn

St. Christopher Roman Catholic Church, Staten Island
St. Frances de Chantel Church, Bronx
St. Francis of Paola Roman Catholic Church, Brooklyn
St. Francis Xavier, Bronx
St. John Neuman, Staten Island
St. Joseph's Roman Catholic Church, Astoria
St. Kevins Roman Catholic Church, Flushing
St. Mark School, Brooklyn
St. Mary Gate of Heaven, Ozone Park
St. Matthias RC Church, Ridgewood
St. Michael's Church, Flushing
St. Stanislaus Kostka RC Church, Maspeth
St. Sylvester R.C. Church, Staten Island
St. Theresa School, Bronx
Staten Island Jewish Community Center, Staten Island
Sterling National Bank, Manhattan
Structure Tone, Inc., Manhattan
Sts Philip & James School, Bronx
STV Incorporated, Manhattan
Syska Hennessy Group Inc., Manhattan
The Brick Presbyterian Church, Manhattan
The Brooklyn Hospital Center, Brooklyn
The Church of Blessed Sacrament, Manhattan
The Church Of Holy Name Of Jesus, Brooklyn
The Church Of St Mark Inc, Brooklyn
The Church of the Blessed Sacrament, Manhattan
The Fresh Meadow School, Queens Village
The Lutheran Church & School of Our Saviour, Bronx
The Playpen Creative Child Care Center, Brooklyn
The Presbyterian Church of St. Albans, Saint Albans
The Salvation Army Harlem, Manhattan
The Salvation Army-Bedford Stuyvesant, Brooklyn
The Salvation Army-Buswick Church, Brooklyn
The West Farms School, Bronx
Thomas M Amato Co, Bayville
Three Hierarchs Greek Orthodox Church, Brooklyn
Trinity Lutheran Church, Middle Village
Trinity United Methodist Church, Bronx
Troop 17 Activities Committee Inc, Elmhurst
True Light Lutheran Church, Manhattan
United Lubavatcher Yeshiva of Ocean Pk, Brooklyn
Us Customs & Border Protection, Jamaica
US Customs and Border Protection, Manhattan
VFW Prince Wynn Post 260, Broad Channel
Villa Maria Academy Inc., Bronx
WB Wood, Manhattan
Woodrow United Methodist Church, Staten Island
WSP/ Parsons Brinckerhoff, Manhattan
Y After School at PS 19-YMCA, Staten Island

Zimmer Club Youth Conservation Inc., Staten Island
Zion Baptist Church, Springfield Gardens



>> How Do You Lead?

"Everyone is born a leader, but I considered myself a good leader because I was not afraid to guide all and be guided by many. I learned to build bonds, friendships, and smiles, while giving back to those who need it and might not have a smile, a friend, or a special bond with someone."

– Genesis M., Law Enforcement Explorer, 34th Police Precinct, Manhattan



2015 Operating Budget

2015 INCOME

Camping & Activities:	\$3,486,159
Endowment Generated Income:	\$344,487
Government Agencies:	\$27,284
Friends of Scouting:	\$1,617,280
Legacies & Bequests:	\$1,172,225
Other Revenue:	\$220,330
Product Sales (Net):	\$26,642
Foundations, Corporations & Trusts:	\$700,500
Special Events (Net):	\$4,007,858
Total Revenue:	\$11,602,765

2015 EXPENSES*

Programs:	\$8,796,766
Management:	\$679,243
Development Expenses:	\$1,659,136
Total Expenses:	\$11,135,145

*Pending 2015 annual audit. If you would like the final audited copy of the Council's income and expenses, please contact Bob Madsen at (212) 651-3075 or email Bob.Madsen@Scouting.org.

2014 INCOME*

Camping & Activities:	\$3,601,015
Endowment Generated Income:	\$295,700
Government Agencies:	\$23,444
Friends of Scouting:	\$1,831,069
Legacies & Bequests:	\$160,735
Other Revenue:	\$37,613
Product Sales (Net):	\$23,438
Foundations, Corporations & Trusts:	\$845,250
Special Events (Net):	\$4,011,240
Total Revenue =	\$10,829,504

2014 EXPENSES

Programs:	\$8,474,234
Management:	\$842,357
Development Expenses:	\$1,239,557
Total Expenses:	\$10,556,148

2015 Executive Committee

»» Chair

Alair Townsend
Former Publisher, Crain's New York Business

»» President

Ray Quatararo
Managing Director, Real Estate Executive
JPMorgan Chase

»» Council Commissioner

Tony Fiori
Managing Director, Health Solutions
Manatt, Phelps & Phillips

»» Scout Executive and Chief Executive Officer/Secretary

Ethan V. Draddy

»» Treasurer

John D. Thomopoulos
Partner, Ernst & Young LLP

»» Assistant Treasurer

John Greed
President, Mutual of America

»» Finance Chair

Theodore R. Gamble, Jr.
Managing Director, The Prescott Group, Inc.

»» Vice President, Risk Management

Thomas S. Bain
Managing Director, Blackrock

»» Vice President Board Giving

Thomas J. Kavalier, Esq.
Partner, Cahill Gordon & Reindel LLP

»» Investment Committee Chair

Ellen R. Harris, CFA
Investment Associate, Merrill Lynch
Wealth Management

»» Vice President-Membership

Richard A. Davies
Managing Director, Defined Contributions,
AllianceBernstein Institutional Investments

»» Vice President – Exploring

James K. Donaghy
Executive Chairman, StructureTone

»» Camping Committee Chair

Philip L. Green
Partner, Ernst & Young LLP

»» General Counsel

Richard Hans
Co-Managing Partner, DLA Piper

»» Vice President – Alumni Relations

Richard G. Mason, Esq.
Partner, Wachtell, Lipton, Rosen & Katz

»» Program Chair

Geoffrey A. Mills
President and Chief Executive Officer
GAM Hospitality

»» Nominating Committee Chair

Deryck A. Palmer, Esq.
Partner, Pillsbury Winthrop Shaw Pittman LLP

»» Vice President – Hispanic Initiatives

Dr. Antonio Perez
President, Borough of Manhattan
Community College

»» Executive Vice President

J.E. Reeves, Jr.
President, The Reeves Foundation

»» Vice President

Omer S. J. Williams, Esq.

»» Bronx Borough President

Joseph Kelleher, RPA
President & Chief Operating Officer,
Hutch Management LLC

»» Brooklyn Borough President

Steven Mirones
President of Arimed Orthotics & Prosthetics

»» Staten Island Borough President

Christopher Williams
Williams Eye Works

»» Manhattan Borough President

Peter Micca
Partner, Deloitte & Touche

»» Queens Borough President

Michael Sibilia
Chief Financial Officer, JFK International Airport



Board of Directors

Directors

Robert Adamo

Partner, Deloitte & Touche

Jino Ahn

CEO & Founder, Asian Diversity Inc.

Steven M. Alden, Esq.

Of Counsel, Debevoise & Plimpton

Vincent Alvarez

President, New York City Central Labor Council, AFL-CIO

David S. Bagatelle

President, New York Metro Markets, Sterling National Bank

Lawrence E. Bathgate, III

Managing Partner, Bathgate, Wegener & Wolf P.C.

David Buckner

President, Bottom Line Training & Consulting, Inc.

John A. Catsimatidis

Chairman & Chief Executive Officer, Red Apple Group

James Claffey

President, International Alliance of Theatrical Stage Employees Local 1

Arthur B. Crozier

Co-Chairman, Innisfree M & A Incorporated

Donald J. Cunningham**Dr. Christopher Dennis**

Chief Psychiatric Officer, Landmark Health

William Q. Derrough

Managing Director, Co-Head of Recapitalization & Restructuring, Moelis & Company LP

Gregory Floyd

President, Teamsters Local 237

Eugene Gottesman

Chairman, Special Projects, President, The Gottesman Company

William J. Haynes, II

Executive Vice President, Secretary, and General Counsel, CRSA, Inc.

R. Glenn Hubbard

Dean, Graduate School of Business, Columbia University

Joanne Jaffe

Chief of Community Affairs, New York City Police Department

M. Benjamin Jones

Senior Managing Director, CDG Group

Lisa J. Keill

Vice Chairman, JLL

Gary LaBarbera

President, Building & Construction Trades Council of Greater New York

Carol Notias Lambos, Esq.

The Lambos Firm LLP

Ron Lo Russo

Executive Vice President, Cushman & Wakefield

Brian T. Maloney

Former President, UNISYS Global Industries

Joseph Mizzi

President, Sciam Construction Co.

Brian S. Moore

Partner and Tax Practice Leader, Grant Thornton LLP

Scott Nadeau

General Manager, New York Marriott Marquis

Peter D. Noris

Former Chief Investment Officer, AXA Equitable Life

Bishop John O'Hara

Office of Strategic Pastoral Planning, Archdiocese of New York

Kevin J. Pearson

Vice Chairman, M & T Bank

Christopher Raleigh

Chief Commercial Officer, PlaceMedia

Asim Rehman

General Counsel, Office of the Inspector General for the New York City Police Department, NYC Department of Investigation

Paul J. Reszutek

Partner, Deloitte and Touche LLP

Michael A. Ross, Esq.

Senior Advisor, Blaqwell, Inc.

Jack Rudin

Chairman, Rudin Management Company Inc

David V. Shields

Vice Chairman, Wellington Shields & Co. LLC

Gregory Shunick

Managing Principal, G3 Architects

Andrew J. Sommer

OA Lodge Chief, Kintecoying

Hon. Robert K. Steel

Chief Executive Officer, Perella Weinberg Partners LP

The Honorable Sidney H. Stein

United States District Judge, United States District Court

Alphonso E. Tindall, Jr., Esq.

Partner, Schiff Hardin LLP

David Vavrasek

Vice President Enterprise Commercial, Tyco

Matthew Van Buren

President, CBRE, New York Tri-State Region

Hon. Gordon J. Whiting

Managing Director, Angelo Gordon & Company

Omer S. J. Williams, Esq.**Allen R. Wolff, Esq.**

Shareholder, Anderson Kill, P.C.

Advisory Board**Hon. William J. Bratton**

Commissioner, New York City Police Department

Board of Directors

William G. Cohen

Executive Vice President
Newmark Grubb Knight Frank

David Davis

President & General Manager, WABC TV

John E. Franzreb, III

Thomas G. Fruge

Managing Director
Goldman Sachs & Company

Earl G. Graves

Chairman & Executive Officer,
Earl G. Graves Publishing Company

The Hon. Thomas P. Griesa

United States District Court
Southern District of New York

Charles H. Kaplan, Esq.

Member, Sills Cummis & Gross P.C.

Hon. Raymond W. Kelly

President, Risk Management Services
Cushman & Wakefield Inc.

Benjamin V. Lambert

Chairman, Eastdil Secured

Mrs. Franklin D. Roosevelt, Jr.

The Hon. Arthur M. Schack, J.S.C.

Kings County Supreme Court
2nd Judicial District of NY

Stephen B. Siegel

Chairman of Global Brokerage,
CB Richard Ellis, Inc.

Andrew J. Sommer

Youth Representative & Order of
the Arrow Chief

The Hon. John J. Vessey

Administrative Law Judge,
Mrs. Franklin D. Roosevelt, Jr.

David J. Walsh

President & Chief Executive Officer
Amalgamated Life Insurance
Company Inc.

Mark B. Weisburger

Gary E. Wendlandt

Former Vice Chairman
New York Life Insurance Company

Edward Yelon

Honorary Life Members

Arthur P. Bartholomew, Jr.

Donald E. Procknow

Members-At-Large

Harvey P. Alstodt

President, Harvey P. Alstodt & Associates

John H. Austin Jr.

Assistant Special Agent-In-Charge,
Drug Enforcement Administration

Gregory Braca

President, Metro New York TD Bank

Chip Brian

President & Chief Executive Officer
Comtex News Network

Jerome A. Chazen

Chairman,
Chazen Capital Partners, LLC

James J. Devine

Retired President & Chief Executive Officer
New York Container Terminal

William M. Kearns, Jr.

W.M. Kearns & Co., Inc.

Timothy A. O'Neill

Eric Rudin

Executive Vice President
Rudin Management Company

John F. Tsui

Managing Principal
Peninsula House, LLC

*Financial Tribute John C. Whitehead Award
honoree William Derrough, Managing Director,
Co-Head of Recapitalization & Restructuring,
Moelis & Company LP, with NYC Scouts*



>> How Do You Lead?

"Learning for Life's Exploring program has given me the opportunity to acquire leadership skills I will carry with me for the rest of my life. Through discipline, respect, and open communication from my advisors and peers, I have a better understanding of my capabilities. I was given the privilege to step up and accept the role of Explorer-in-Charge of my post for 2 consecutive years.

Through this program I have learned what it means to be a leader, and the responsibilities attached to the title. Everyone has strengths and weaknesses, but learning to turn those weaknesses into strengths is what makes a leader, and a team so great."

– Sophronia M., Business Explorer, Silvercup Studios



"Scouting helped me get through having stage 2A Hodgkin Lymphoma with having a positive attitude, people there to show support and activities that kept me going... Scouting helps me to be prepared for whatever life decides to throw at me."

– Katie Cass, Venture Scout, Crew 640, Staten Island

Named Endowment Funds

The Greater New York Councils is extraordinarily honored and proud to further extend Scouting and Exploring as specified by the following named funds. We continue to especially appreciate and salute the donors responsible for creating and sustaining all funded purposes.

Greater New York Councils Endowment Fund

Brooklyn Heritage Society

Manhattan Heritage Society

Queens Heritage Society

Staten Island Heritage Society

Ten Mile River Museum Heritage Society

Ten Mile River Fund

Irving Berlin Endowment Fund

Alan C. "Ace" Greenberg Memorial Fund

John F. McGillicuddy Memorial Fund

Diane and Richard M. Ruffino Fund

Joe Bradley Memorial Fund

Adele V. Deckinger Memorial Fund

Deckinger Fund for Special Needs Scouting

Durst Family Fund

Gottesman Family Fund

The Elsie Froessel Queens Youth Fund

Michael G. Mann Eagle Scout Scholarship Fund

Peter D. Nelson Memorial Fund

Raleigh Family Fund

Reeves Foundation Fund

Robert K. Steel Endowment Fund

John Leo Zlobik Fund for Scouts with Special Needs

Enterprise Rent-A-Car Fund

>> Find Out More

To learn more about how you can help support Scouting and Exploring through these funds or create your own, please contact Steven Benini at 212-651-2815 or Steven.Benini@Scouting.org.



In Memoriam **Distinguished Eagle Scout E. Virgil Conway**

As a longtime member of the GNYC Board of Directors, he was a generous supporter and friend to NYC Scouting and Exploring. He was a Distinguished Eagle Scout and also a recipient of the Silver Beaver Award. Virgil had a distinguished career in business and public service, and served as Chairman of the MTA under Governor George Pataki, where he oversaw many reforms and improvements, such as the introduction of the MetroCard and the restoration of Grand Central Terminal.



Remembering John C. Whitehead

A Lifetime in Leadership.

In early 2015 we lost our beloved Board Chair Distinguished Eagle Scout John C. Whitehead. John was involved in Scouting for over 80 years, holding several leadership positions, including serving as President for several years and Chairman of the Greater New York Councils for 25 years. After serving in the U.S. Navy, including leading six landing craft in the first wave on Omaha Beach on D-Day, John went on to an extraordinary career in business with Goldman Sachs, where he served as Co-Chairman. In public service, he was the Deputy Secretary of State under President Ronald Reagan, and served as Chairman of the Lower Manhattan Development Committee and National September 11 Memorial and Museum, leading the rebuilding effort following the September 11 attacks.



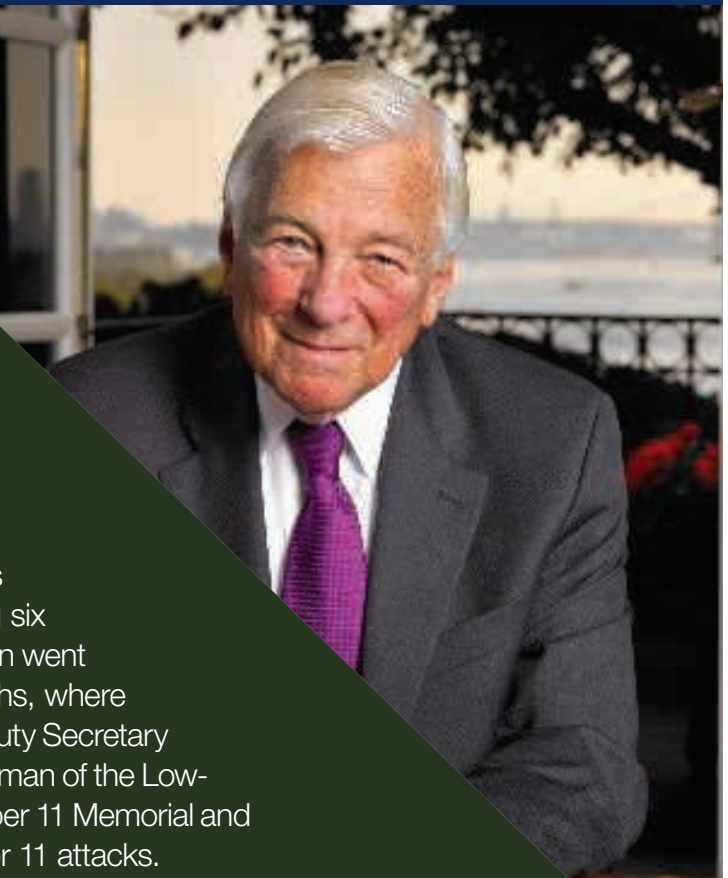
He understood the importance of taking on leading roles, in Scouting, in business, and the world at large. In his autobiography, "A Life in Leadership," he writes:

"If you want to bring positive change to the world and to make a difference in your life, you need to be a leader. Followers are important, but leaders are essential."

Mr. Whitehead raised literally tens of millions of dollars for Scouting programs. He helped secure the support of many to improve our camp facilities, including most recently, a generous gift from NY Jets owner Woody Johnson for the Billy and Keith Johnson Scout Center at Ten Mile River Scout Reservation which opened this past summer.

In honor of his leadership and generosity to the Goldman Sachs campaign, we renamed this The John C. Whitehead Campership Fund. Thanks to a generous challenge campaign led by the Reeves Foundation, renovations to the John C. Whitehead Dining Hall are underway and will be complete this spring.

In recognition of his tremendous achievements and service to Scouting and to our nation, Mr. Whitehead received the Silver Beaver Award, and the Silver Buffalo Award.



Major Contributors

\$1,000,000

John C. Whitehead

\$500,000

Barbara and Ray Dalio

\$250,000 & above

The Reeves Foundation

\$100,000-\$249,999

Thomas S. and Patricia Bain

Bloomberg Philanthropies

The Honorable Michael R. Bloomberg

William Q. Derrough

Elaine Dooman

Eilopoulos Family

William Randolph Hearst Foundation

The Heckscher Foundation for Children

Mutual of America

John Paulson

Jack and Susan Rudin

Mr. & Mrs. Gary Wendlandt

\$50,000-\$99,999

Irene D. Colli Trust

E. Gerald Corrigan

God Bless America Fund

The Horace W. Goldsmith Foundation

KaBOOM!

Kirkland & Ellis, LLP

MetLife

The Paul E. Singer Foundation

Starr Foundation

Robert K. Steel

United Technologies Corporation

Willis North America

Zurich Financial Services

\$25,000-\$49,999

CBRE, Inc.

CCMP Capital Advisors

Con Edison

Conde Nast

Cushman & Wakefield

Richard A. Davies

The Donaldson Organization

Goldman Sachs Gives/Anonymous

John Greed

Ellen R. Harris, CFA

John B. Hess

R. Glenn Hubbard

JPMorgan Chase & Co.

Kramer Levin Naftalis & Frankel, LLP

Richard G. Mason, Esq.

The Ambrose Monell Foundation

New York City and Vicinity Carpenters District Council

Deryck A. Palmer, Esq.

Paul, Weiss, Rifkind, Wharton & Garrison

Thomas L. Piper, III

Raymond Quartararo

E. John Rosenwald, Jr.

RT Specialty Group

May and Samuel Rudin Family Foundation

Muriel F. Siebert Foundation

Skadden, Arps, Slate, Meagher & Flom

Structure Tone Inc.

Alair A. Townsend

Unity Electric Co., Inc.

Willkie Farr & Gallagher, LLP

XL Group

\$15,000-\$24,999

ACE Group

ADP Foundation

AIG

American Airlines

Anonymous

Aon

Steven M. Barry

Boeing Commercial Airlines

Boeing Defense Systems

The Peter & Carmen Lucia Buck Foundation Inc.

BTEA

Cantor Fitzgerald

Thane W. Carlston

Catlin Insurance Company Inc.

Cleveland H. Dodge Foundation, Inc.

Endurance Specialty Holdings Ltd.

George A. Gaston Charitable Trust

Eugene Gottesman

The Hyde and Watson Foundation

JLL

Thomas J. Kavalier, Esq.

Charles S. Keene Foundation

Carol Notias Lambos, Esq.

Latham & Watkins

Lockton Companies, LLC

Major Chevrolet

Marsh & McLennan Companies

PAL Environmental Services

Princeton Area Community Foundation

Muneer A. Satter

Sciame Construction Co.

STV Inc.

Turner Construction

US Maritime Alliance, Ltd.

Wells Fargo

\$10,000-\$14,999

AAR Corporation

Accenture Consulting

Robert Adamo

AERCAP NV

Ahmuty, Demers & McManus

AlixPartners

Allied World

Amwins Group

Arch Insurance

Aspen Re

Atlantic Health System

AXIS Specialty US Services, Inc.

BankUnited

Lawrence E. Bathgate, II

Blackstone Charitable Foundation

Broadway Stages, Ltd.

Brookfield Properties Corp.

Brooklyn Chinese-American Association

Brown & Brown, Inc.

Brown Rudnick LLP

The Carter Fund

Cashin Family Fund

Cassone Leasing, Inc.

CDG Group, LLC

Centerbridge Partners

Charina Foundation, Inc.

Clark Law Firm, P.C.

Component Assembly Systems, Inc.

Deloitte

Drexel Burnham Lambert Fund

John S. Dyson

Archie Edgar

Empire Blue Cross Blue Shield

EvensonBest

Federal Law Enforcement Foundation

Fitness Lifestyles

Five Star Electric Corp.

Edward Forst

Gilbane Building Company

Glenwood Management

Daniel H. Golden

Eugene J. Gottesman

Philip L. Green

Guggenheim Partners

Marlene Hess, Hess Foundation

Amy Hunter

IronShore Inc.

Jenner & Block LLP

JFK International Air Terminal LLC

Peter R. & Cynthia K. Kellogg Foundation

L & L Holding Company, LLC

Lewis Brisbois Bisgaard & Smith LLP

Liberty Mutual Insurance

Loews Hotel

The J. Willard and Alice S. Marriott Foundation

McKinsey & Company

Peter Micca

Milbank, Tweed, Hadley & McCloy, LLP

Morgan Stanley

Thomas S. Murphy

The Navigators Group, Inc.

New England Patriots Foundation

New York Giants

New York Hilton Midtown

New York Jets LLC

New York Yankees

The New York Yankees Stadium Community Benefits Fund, Inc.

Newmark Grubb Knight Frank

PepsiCo Foundation

Pillsbury Winthrop Shaw Pittman LLP

Plaza Construction Company

Quinn Emanuel Urquhart & Sullivan, LLP

Saul Ewing LLP

P. Schoenfeld Asset Management

Robert & Karen Scott

SL Green Realty Corp

Alan Smith

Jerry I. Speyer

Stroock & Stroock & Lavan LLP

TD Charitable Foundation

Tishman Construction/ An AECOM Company

Wachtell Lipton Rosen & Katz

The Hon. Gordon J. Whiting

Young Conaway Stargatt & Taylor, LLP

\$5,000-\$9,999

21st Century Fox

A Papas Corp Giving

ABM Industries

ABS Partners Real Estate, LLC

ACC Construction

Major Contributors

Adco Electrical Corporation	Ethan Draddy	Jack Resnick & Sons	Dr. Antonio Pérez
Adelhardt Construction Corporation	Durnan Group	JaniceMichelle Foundation	Michael Pietraszek
Admore Air Conditioning Corporation	E.W. Howell Co., LLC	Jantile Inc.	Pitta & Giblin LLP
Airbus Group Inc.	Eagle Interiors Inc.	Jaros Baum & Bolles	Plumbers Local Union No.1
AKF Group, LLC	Steven G. Einhorn	JC Decaux	PricewaterhouseCoopers LLP
Allied Building Products Corp.	EmblemHealth, Inc.	Jerome Aluminum Products Corp.	QBE North America
Alvarez & Marsal	Embraer	Johnson & Johnson	Queens Ballpark Company, LLC
Amalgamated Transit Local 1056	Empire Architectural Metal Corporation	Joseph Kelleher, RPA	Railroad Construction Co., Inc.
Peter Anderson	Enterprise Association Steamfitters Local Union 638	Michael Kerner	RailWorks Corporation
Apollo Investment Corporation	The Estee Lauder Companies, Inc.	Council Member Peter Koo	Ralph Lauren Corporation
Aristeia Capital	Everest Reinsurance Company	Kulite Semiconductor Products, Inc.	J.E. Reeves, Jr.
Armstrong World Industries, Inc.	FedEx Corporation	L&K Partners, Inc.	The Related Companies
Aspen Insurance	Feldman Lumber	Lane Office Furniture, Inc.	Renaissance Re Holdings Ltd.
Atlantic Coast District, ILA, AFL-CIO	The First Tee of Greater Trenton	Lend Lease LMB, Inc.	Resorts World Casino
Benjamin Construction	James E. Fitzgerald, Inc.	Ron Lo Russo	Paul Reszutek
Benson Industries LLC	David and Judith Fleischer	MarketPlace LaGuardia, L.P.	RFR Holdings LLC
Joshua Berkowitz	Flushing Bank	M3 Technology, LLC	Michael A. Ross, Esq.
John H. Biggs	Forest Electric Corp.	Maher Terminals LLC	Rotary Club of New York
Boston Properties	Fred Geller Electrical, Inc.	Mar Air Foods	RR Donnelley
The Nicholas J. and Anna K. Bouras Foundation	Alex Fredericks	Marino/Ware Industries	S Beatty Corp Events
Bracewell & Giuliani	Richard Friedman	Markel Corporation	Sackman Enterprises
Brooklyn Community Foundation	GCT USA	Anders J. Maxwell	Safway Atlantic
Building Contractors Association, Inc.	GE Aviation	McDermott Will & Emery	Julian C. Salisbury
Cahill Gordon & Reindel LLP	Robert Charles Golden	Melto Metal Products Co., Inc.	Savills Studley
Carolina Panthers	Grain Management	Metropolitan Marine Maintenance Contractors Association	Seabury Group
Cauldwell-Wingate Company, Inc.	Grassi & Company	Mitsubishi Aircraft Corporation America, Inc.	Seagate Law Enforcement Foundation, Inc.
CBRE / Capital Markets	Greater New York Floor Coverers Industry Promotional Fund	National Acoustics, Inc.	Sheraton Hotels of New York
CBS Corporation	Greater New York LECET	National Grid	Signature Bank
Cement And Concrete Workers Local 18A	The Hon. Thomas P. Griesa	New York City Football Club	Silverstein Properties, Inc.
The Cement League	The Hartford	New York City REIT	William E. Simon Foundation, Inc.
Clifford Chance US LLP	Gates H. Hawn	New York Community Bank Foundation	Simplex Grinnell
CNA	William J. Haynes, II	New York Hotel & Motel Trades Council, Local 6	Skanska USA Building Inc.
Collins Building Services	HealthPass	New York Marriott Marquis	SL Green
Daniel Connolly	Johnathan M. Hoff, Esq.	New York Shipping Association	Cody J. Smith
Leon G. Cooperman	Philip and Mary Hogan	New York State Iron Workers District Council	Peter J. Solomon Company
Coordinated Metals Inc.	Holt Construction	Northfield Bank Foundation	Sound Refrigeration & Air Conditioning
Crawford & Company	Hotel Association of New York City, Inc.	NorthStar Contracting Corp.	SSP America
CRC Wholesale Group	William L. Huisman	NYC & Company	Starwood Hotels & Resorts
Cross Country Construction	IBEW Local 3	NYSLECET, Laborers Local Union 731	Sterling National Bank
Curtis Partition Corporation	ILA, Local 1588	Robert C. O'Brien	Sullivan & Cromwell LLP
D&B Cousins Construction Corp.	Insera Supermarkets	Office of Special Narcotics	Swiss Re
Kenneth Damstrom	Interior Demolition Contractors Association	O'Melveny & Myers LLP	Teamsters Local 282
J. D'Annunzio & Sons Incorporated	International Association of Bridge Structural & Ornamental Iron	P.E. Stone, Inc.	TEI Group, Inc.
The Dr. E. Lawrence Deckinger Family Foundation, Inc.	International Longshoremen's Association	Pabco Construction Corporation	Time Warner
Degmor, Inc.	Interstate Drywall Corporation	Pace Plumbing Corp.	Alphonso E. Tindall, Jr.
Del Savio Construction Corp.	IUOE Local 14-14B	Park Avenue Building & Roofing Supplies	Total Quality Fire & Security Inc.
DNA Controlled Inspections Ltd.	J.T. Magen & Company	Henry M. Paulson	Tri-Star Construction Corp.
Dowling & Partners Securities, LLC			Council Member Eric Ulrich
			USG Corp

Major Contributors

Council Member Paul Vallone

David Vavrsek

Robin and Liselotte Vince

Visa, Inc.

James Volpe Electrical Contracting

Vornado Realty Trust

W&W Glass Systems

Waldorf Demolition

Walton Street Capital, LLC

Ware Industries Inc.

WDF, Inc.

Wells Fargo Foundation

Westfield JFK International Airport

Meredith Williams

Withers Engelke & Assoc. Inc.

Anthony H. Zalak

Zwicker Electric Co., Inc.

\$2,500-\$4,999

ABCO Peerless Sprinkler Corp.

Ace-Atlas Corporation

Alexander Wolf & Son

Earle S. Altman

American Maritime Services

Americon Construction, Inc.

ATO Contracting Corp.

Archimedes Academy for Math,
Science & Tech

Architectural Flooring

Association of Electrical Contractors

Association of Wall Ceiling & Carpentry
Industries

Astoria Federal Savings

Atlantic Exterior Wall Systems

Atlantic Stone & Tile

Atlas-Acon Electric Service Corp.

B.P. Precise Construction

BBH Solutions

Benfield Electric Supply Company

Steven Benini

The John N. Blackman, Sr. Foundation

Franciso L. Borges

Brazill Brothers

Brooklyn Nets

Building & Construction Trades Coun-
cil of Greater New York

The Carwill Foundation

Celtic Sheetmetal, Inc.

Ceramic Tile Promotion Fund of Great-
er NY & NJ

Chelsea Lighting

Andrew A. Chisholm

Cirocco & Ozzimo Inc.

Citi Business Services

The Dorothy K. Commanday Foun-
dation

Component Assembly Systems, Inc.

Construction & Realty Safety Group,
Inc.

E. Virgil Conway

Cooper Electric

Cord Contracting Co., Inc.

Council of School Supervisors and
Administrator

Cradle of Aviation Museum

Creative Environment Solutions Corp.

Credit Suisse (CSFB)

Crowne Plaza JFK

CTG Cole Technologies Group

Donald J. Cunningham

CUNY Research Foundation

John C. Cushman, III

Delaware North

Deloitte

Delta Airlines

Denihan Hospitality Group

Dime Savings Bank of Williamsburgh

District Council 37

DiVernieri, DiVernieri & Cotter

Dobkin Family Foundation

Donnelly Mechanical Corp.

Durr Mechanical Construction Inc.

Eastern Consolidated Properties, Inc.

Eaton's B-Line

E-J Electric Installation Co.

Eldor Contracting Corp

Electrotech Services Equipment

Ener-G Rudox Inc.

Environmental Contractors Association

Ernst & Young

Eurotech

R. Bradford Evans

Samir A. Farag

Feldman Lumber Company

Anthony Fiori

Firecom, Inc.

Firequench, Inc.

First Eagle Investment Management
Foundation

First Washington Realty

FJC Security Services, Inc

Carol A. Flaton

Forest Electric Corp.

Galasso Trucking, Inc.

Theodore R. Gamble, Jr.

The General Contractors Association
of N.Y., Inc.

Generator Media + Analytics

Gibson, Dunn & Crutcher LLP

Go Charity

Grant Thornton, LLP

Graybar Electric

Steve Greenberg

The Harry Frank Guggenheim Foun-
dation

H&L Electric

Robert Hackney

Richard Hans

Harbour Mechanical Corp.

Harvard Maintenance

HEFTI

Henegan Construction Co., Inc.

Hillmann Consulting, LLC/JVN Res-
toration

ICAS Corporation

ILA Local 1

International Asbestos Removal Inc.

International Brotherhood of Team-
sters

International Longshoremen's Associa-
tion, Local 1804

International Longshoremen's Associa-
tion, Local 1235

Intricate Construction, Inc.

Investors Bank

Investors Foundation

The Jana Foundation, Inc.

JetBlue

JFK Air Ventures II, JV

Joint Industry Board of the Electrical
Industry

Jonathans Metal & Glass

M. Benjamin Jones

Jonis Realty Partners | Cit-Urban Mgt.

JRM Construction Management

K&S / King and Spalding, LLP

Lee & Associates NYC

Levitan Robbins/Cooper Electric Supply
Co.

Levitt-Fuirst Associates, LTD

Life Insurance Council of New York,
Inc.

Lincoln Electric

Litespeed Electrical

Local 147 - LIUNA

Loeb Partners Realty LLC

The Margaret and Daniel Loeb-Third
Point Foundation

LS Travel Retail North America

LV Electrical Solutions, Inc.

Peter L. Malkin

Marrinan & Mazzola Mardon, P.C.

Mason Tenders District Council

Michael Mattone

Milo Kleinberg Design Associates, Inc.

Steven A. Mirones

Monarch Electric Co

Michelle & Douglas Monticciolo

The Morrison & Foerster Foundation

Munich Re

Neuman's Kitchen

New York Electrical Contractors Asso-
ciation, Inc.

New York Fire Detection, Inc.

New York Light Source Corporation

New York Methodist Hospital

New York's Hotel Pennsylvania

North East Business Group on Health

Northfield Bank

Oakland Raiders

David P. O'Connor

On-Trac construction Association

Orange County Ironworks

OTG Charities

Our Lady of Perpetual Help

Oxford Airport Tech Serv

P.S. Marcato Elevator Company

Parabit Systems, Inc.

Park Hyatt New York

Partner Reinsurance

Jeffrey Peek

Ian M. Pinnavaia

Plasterers' Local 262

Platinum Maintenance Services Corp.

Point72 Asset Management, L.P.

Constance and Gary Pond

Port Newark Container Terminal

Portwide Cargo Securing, Co.

PSE & G

PyroSignal & Suppression

Quad/Graphics Inc.

RCR Associates, LLC

Regional Alliance For Small Contrac-
tors

Reynolds Consulting Services

Ronald McDonald House

Harold I. Rosenfeld

Major Contributors

Royal Waste Services, Inc.
Keith Safian
Salovaara Family
San Diego Chargers
Savanna Project Management
Richard Schifter
Joseph Schiltz
Schindler Elevator
Schroder & Strom, LLP
Matthew R. Scott
Shore Supply, Inc.
Mr. & Mrs. Roy C. Smith
Social Service Employees Union Local 371
Russell Somntag
Sorbara Construction Corp.
StandardAero
Syska Hennessy Group
Ted Moudis Associates
Terminal Link USA
Trade Web
Transatlantic Reinsurance
Robert Stewart Trump
David Turner
United Federation of Teachers
United Rentals
George M. Van Cleave
Vanderlande Industries, Inc.
Vaughn College of Aeronautics
Hon. John J. Vesey
Victory State Bank
The Waldorf=Astoria
Warsaw Inc
Wells Fargo Advisors
Christopher Williams
Omer S. J. Williams, Esq.
Xpres Spa
Edward Yelon

\$1,000-\$2,499

265 Realty LLC
360 National Restoration
A.D. Winston Corp
James E. Abbott, Esq.
Advent Intermodal Solutions, LLC
The Adventure Park on Long Island

Adventureland
Air Services Development Office, Inc. NJ
Airline Vending Service, Inc.
Airway Inc.
Steven M. Alden, Esq.
Anne D. Alexander
Robert Alexander
All City Switchboard
Allied Aviation Services, Inc.
Allied Risk Management
Rosalyn Allman-Manning
AllRan
Almar Plumbing & Heating Corp.
ALR Abstract Services, LLC
Amalgamated Transit Union Local 726
American Bulb Corporation/JAD Corporation of America
Anthem, Inc.
APM Terminals
Apple Metro, Inc.
Arch Reinsurance Company
Archstone Builders
Ariel Property Advisors
Asco Power Technologies
Ashlar Mechanical
Aspro Mechanical Contracting Inc.
Assured Environments
Astor Media Services, LLC
Atalanta Sosnoff Capital
Au Bon Pain
Mitchel August
Automation Graphics, Inc.
Avison Young
Baldor Specialty Foods
Bank of America
Bank of New York Mellon- Corporate Security
Marshall & Margaret Bartlett
Richard Baxter
Marc Beilinson
Benhar Office Interiors
Benson Drywall/BDW Wall Corp
Berardi Stone Setting, Inc.
Dr. Eugene Berman, DDS
Bernstein Real Estate
Binsky & Snyder, LLC
The Birkelund Fund
William David Bisceglia
Blackstone Real Estate Advisor
Charles R. Blaich

Stephen J. Blauner
Howard Blaustein
Charles Borrok
BP Mechanical
Anthony Francis Bracciante
The Brodsky Organization/Urban Associates
Brooklyn Baseball Co., LLC
Brothers & Company
Brown Harris Stevens
Thomas and Marissa Brust
Burnham Sterling
Louis L. Buttermark & Sons
C & D Restoration, Inc.
C.B. Contracting Corp.
C.D.E. Air Conditioning
Campbell & Dawes Ltd.
Basil Capetanakis
Melissa I. Carbone
Cargo Airport Services USA LLC
Richard Carthas
Casey Funeral Home
Catholic Foundation for Brooklyn & Queens
CCC Service Corporation
Center Sheet Metal
CenterPlate
Jerome A. Chazen
Michael Chiappone
Kenneth Chiocchi
Chobani
Chubb & Son
Louis C. Ciliberti & Associates
City Employees Union Local 237
City Lumber, Inc.
James Claffey
Class B
Clune Construction
Bruce E. Cobern
Jonathan L. Cohen
Stuyvesant Comfort
Comptroller City of New York
Connors and Sullivan
Container Royalty Central Collection Fund
Contractors Association of Greater New York, Inc. (CAGNY)
Frank Cooney
The Corcoran Group
Christopher Coscia
Country Bank

Cozen O'Connor
CPL Group
Crawford & Bringslid Attorneys at Law
Crowne Plaza/Sylvia Geronimo
CSC
Cullen & Dykman
Christine Daley
David Shuldiner Inc.
Francois de Saint Phalle
Paul DeNoon
Design Republic
DFS North America
Mitchell Dickman
Edward W. Dickson
John J. Doherty
Donovan, LLP
Douglaston Development
Robert N. & Nancy A. Downey Foundation
Mr. and Mrs. Robert Dries
Drywall Taping Contractors Association
DTCC
Charles P. Durkin, Jr.
The Durst Organization
Duty Free Americas, Inc.
Duty Free Shoppes
DYCON Enterprises, Inc.
EarthShare NYC Gives
Eco Specialities
ECOLAB
Eden II School for Autistic Children
Edward Don & Company
EIC Associates Inc.
Empire City Consultants
Empire Merchants
Ensign Engineering
Envirochrome Interiors
Epstein Becker & Green, P.C.
Phillip Errigo
Ess & Vee Acoustical Contractors, Inc.
F & A Deli, Inc. DBA Diesel Bagels & Deli Too
Jeff Fanara
Dale Favors
Robert A. Fitch
William Fowler
Frank & Sal Italian Market
John E. Franzreb, III
Frank A. Freda
Marc J. Freud

Major Contributors

Thomas G. Fruge	Interior Creations, Inc.	Liberty Democratic Association	MSA Security
G&J Graphics d.b.a The Bronx Design Group	Interior Exterior Building Supply	Anthony G. Limone	Mulé Family Foundation
G.T. Rentals	International Association of Heat & Frost Insulators & Allied Workers,	Linear Contracting, Inc.	Carolyn Murphy
Garfunkel Wild PC	International Blind Contractors, Ltd.	The George Link Jr. Charitable Trust	Devin Murphy
GCM Grosvenor	International Longshoremen's Association, Local 1478-2	Loancore Capital	NAACP
GG Maintenance Group LLC	International Longshoremen's Association, Local 1624	Loews Foundation	National Gypsum Company
Gibson, Dunn & Crutcher, LLP	International Longshoremen's Association, Local 920 AFL-CIO	Long Island Concrete, Inc.	Navillus Tile Inc.
Norman Ginsberg	International Union of Operating Engineers/ Local 137	The Luthmann Law Firm PLLC	Nead Electric Inc.
Joe Girven	International Union of Painters and Allied Trades, District Council No. 9	Timothy Lynn	Joseph Neto & Associates, Inc.
GKN Aerospace	Inverness Counsel	M&T Bank	New York Administrative Employees CWA Local 1180
Global Strategy Group	Investigative Management	Mr. & Mrs Carl (Bob) Madsen	New York Community Bancorp
Goetz Fitzpatrick LLP	Iron Workers Local 40	Robert Maeurer, Sr.	The New York Community Trust
Goldberg, Weprin, Frankel & Goldstein, LLP	Iron Workers, Local 361	Malatesta Paladino Inc.	New York Hospital Medical Center of Queens
Goldman Copeland Associates, P.C.	Island Acoustics	Brian T. Maloney	New York Medical College
Michael Goldstein	Island Fire Sprinkler, Inc.	Mancini Duffy	New York/New Jersey District Council ILA
Lawrence and Jane Gould	IUOE Local 94	Charles Maravolo	Paul Newhouse
Eugene & Emily Grant Family Foundation	IUOE, Local 15	Marco Industries	Newmark Holdings
Graybar	Jacob Javits Convention Center	Barnett Margolis	Newport Painting
Guardian Service Industries, Inc.	James Donaghy	Maritime Advisor LLC	Heidi Nitze
Haberle Steel, Inc.	Jansons Associates Inc.	Marshall Retail Group	Peter D. Noris
HAKS	Jewish Communal Fund	Marshall, Dennehey, Warner, Coleman, Goggin	North Eastern Bus
Charles & Sarah Hallac	JIB Lanes	Theodore F. Martens	Nouveau Elevator Industries
The Harbor Group	Johnson Controls	The Drew Mason and Babetta Von Albertini Charitable Fund	NRG
Gene Hart	Jones Day	Law Offices of Mattone, Mattone & Mattone	NYC Central Labor Council, AFL-CIO
Ted & Dina Merrill Hartley	David R. Jones	MCA of New York	The Old Stones Foundation, Inc.
Richard M. Hayden	Todd Jones	Caron Ann McCallister, LLC / DBA Garlic Distribution	Harry J. Olsen
Health Warrior, Inc.	Kahn Architecture & Design	Elizabeth McCaul	Oriental Trophy & Rubber Stamp
Healthplex, Inc.	Theodore G. Kakoyiannis	Joseph A. McManus	Palm Bay International
The Healy Family Foundation	The Kandell Fund/Digby Management Co.	Mercer, Inc.	Joseph Palumbo
Robert E. Helpern	Dennis P. Kane	Sue & Eugene Mercy Jr. Foundation Inc.	Pan Brothers Associates, Inc.
Ingeborg S. Hilberg	Marcia Kaplan-Mann	Meridian Capital Group LLC	Parsons Brinkerhoff, Inc.
Franklin W. Hobbs	Kaufman Dolowich & Voluck LLP	Meridian Properties	Penguin Air Conditioning
Ken R. Holden	KCM Plumbing & Heating Corp.	Michael DeJohn Sales, LLC	Penn Jersey Paper Co.
Christopher R. Horch	Margaret R. Keene	Micros Retail Systems, Inc.	Merz K. Peters
Hub International	King and Spalding	Midhattan Woodworking Corp.	Eddy Petersen
Hudson Bay Capital Management LP	Vickie Kontos	Midtown Electric Supply	Gregory J. Peterson
Hudson News/Group	Esther Koven	Milrose Consultants Inc.	Pittman Family Foundation
Hudson Valley Bank	KPMG	Joseph Mizzi	Planetary Recreations, Inc.
David Humphrey	Jesse Krasnow	Modern Empire Inc.	Plastering & Spray Fireproofing Contract
Hunter Roberts Construction Group	Lab Plumbing & Heating Co., Inc.	Brian S. Moore	Platzer, Swergold, Levine, Goldberg, Katz & Jaslow, LLP
Hutch Metro Center I, LLC	Joseph Large	Shahab Moreh	Martin D. Poller
IA Interior Architects	LAZ Parking	Moretrench American Corp.	David Poppe
Jonathan Bennis	Lazard Frères & Co. LLC	Morgan, Lewis & Bockius LLP	Ports America, Inc.
Ideal Supply Company	James T. Lee Foundation	Morris Nichols Arshat & Tunnell LP	Ports of the Delaware River Marine Trade
ILA, Local 1233	Lewis Leicher	Mortonwilliams Supermarkets	Joseph Praino
Imperial Parking Systems	Adam Levy	Barry G. Moss	Pride Equipment Corp.
Inca Kola		Dr. Ramin Mostafavi, M.D.	Prince Carpentry
Infinity Stone		MPS MGMT	
Insulation Contractors, Inc.			

Major Contributors

Principal Building Services
Pritchard Industry
Quality Sheet Metal
James Quinn
Stuart J. Rabin
The Raji-Syman Family Fund
Ramapo Trust/Brookdale Foundation Group
Rawle & Henderson LLP
Michael Regan
Renue Systems of NY/NJ LLC
RFF & Associates Inc.
Robert Derector Associates
David Rockefeller
Rocklyn Asset Corp.
John A. Rodger
Roger & Sons Concrete, Inc.
Rooftop2 Productions
Rosini Engineering PC
Rotary Foundation of the Bronx Rotary Club
Bonnie Johnson Sacerdote
Sacks & Sacks
Safe Flight Instrument Corp.
Safeway Fire & Protection Company
Stuart Saft
Sak & Rampulla LLP
Santander Bank
Saveria USA
SBF Construction Inc.
The Scharpf Family Foundation
Joseph A. Schenk
Glen Schneider
Ana Sciara
Anthony Scioscia
Segal Consulting
Peter K. Seldin
Settlement Funding Associates
Ashish Shah
Harry Shannon
Amy Shapiro
James Shaughnessy
Sheet Metal Workers Local 137
Eric P. Sheinberg
Sheltair Aviation
David V. Shields
Gregory A. Shunick
Michael Sibilia
Stephen B. Siegel
Signature Construction Group
May T. Skinner
Solid Benefit Guidance

John Sollazzo
Andrew J. Sommer
South Shore Rotary of Staten Island
Southern Wine & Spirits of New York
Spector Group
Spivak Lipton, LLP
St. John's University
Stanley Black & Decker
Staten Island Advance
Steamship Trade Association of Baltimore, Inc.
Mr. & Mrs. Scott G. Stephenson
Steven Kempf Building Materials
Stone Derrickmen IW Local 197
Stonehenge Management, LLC
Stop & Stor
Strang Hayes Holding Corp.
Philip S. Straniere
Strategic Value Partners
Structural Steel Painters, District Council 9, Local 806
Suffolk County National Bank
Super Stud Building Products, Inc.
Sutherland Asbill & Brennan
Amy Westerby Swenson
Alice Szigethy
TDX Construction Corp.
Techno Acoustics Holdings, LLC
Terminal One Group Association, LP
Thermotest North, Inc.
Think Design Architectural Studio
Ralph Thompson
Thornton Tomasetti
Thunder Ridge Ski Area
Thyssenkrupp Elevators Americas
Robert Torretti
Total Fire Protection
Traub Lieberman Straus & Shrewsbury LLP
Triboro Elevator Consultants, LLC
Tri-State Plumbing
Turtle & Hughes, Inc.
Tutor Perini Building Corp
TUW David Landau
UFCW Local 1500
United Asset Strategies, Inc.
United States Luggage Company LP
United Way
United Way of Greater Waterbury
Urban Engineers of New York, P.C.
USI Insurance Services LLC
Vincent Gruppuso Foundation, Inc.

VNA of Staten Island
Vocon
Sean and Heather Ward
Sue Ann Weinberg
John S. Weinberg
Mark B. Weisburger
Westside Wood Refinishing Corp.
Wiley Rein
Winston Financial Services
Thomas G. Wipf
Allen R. Wolff, Esq.
Woodworks Construction Co., Inc.
Gregory Worrell
Victor R. Wright
Yankee Clipper Food Service / Express Hospitality
Kenneth S. Ziman
Roy J. Zuckerberg Family Foundation

\$500-\$999

14 Apollo Real Estate
302 Livingston St. Corp
3L Bros. Corp
A & N Sales, Corp.
A&A Maintenance Enterprise
A. Esteban & Company, Inc.
Accommodations Plus International
Ackman-Ziff Real Estate
Acquavella Galleries, Inc.
Adelphi Academy of Brooklyn
ADJO Contracting
Advanced Electronic Solutions
AFL-CIO Housing Investment Trust
AFSCME, Local 1930 DC37
Jino Ahn
John and Kelly Alexander
Alliant Insurance Services, Inc.
Amalgamated Bank
Joseph Amatrucola
Ambassador Protection Services
AMC Electrical Services, Inc.
AME, Inc.
Jonathan E. Ansbacher
Apollo Aviation Group
Aria Insurance Brokerage, Inc.
Arora Engineers
The Atlantic Group
Atlantic, Tomorrow's Office
Atlas Switch Co., Inc.
Attucks Asset Management, LLC/Leslie Bond Jr.
Av Air Pros

Awisco New York Corp.
Azul Brazilian Airlines
Bank of America United Way Campaign
Gerald Banu
Barth-Gross Electric
Battleship Cove
Be Famous Photo Booth
Edward C. Beach
Robert S. Beane
Belkin Burden Wenig & Goldman, LLP
Bentley Mills
The Berman Group, Inc.
Thomas W. Berry
Big Geyser Inc.
Richard Birrer
Boca Group International Inc.
Bone/Levine Architects
William Borden
Scott Bosworth
Boudreaux Leonard Hammond & Curcio
Brock Solutions
Brookbridge Consulting Service, Inc.
Brookhaven Science Associates, LLC
LI Stem Hub
The Brooks Foundation
BSA National Foundation
Robert Buckholz, Jr.
Crystal Bueno
Michael A. Burgio
Joseph Caday
Charles C. Cahn, Jr.
James Calder
George N. Callas
Thomas F. Campanile
Carco Group Inc.
Cardoza Plumbing Corp.
Carl Vincent Bini Memorial Fund
Suzanne Carlson
Walter Cary
Cascade Water Services
Catalyst Design Group
The Cayemitte Group Inc.
CB Richard Ellis, Inc.
John M. Cefaly
Century Petroleum Ltd.
Certified Alarms Technician Systems
Certified Moving & Storage
CFC of New York City
Mr. & Mrs. Charles Chadwell
Scott Charles
Chicago Mercentile Exchange

Major Contributors

John and Kim Church	The District Council Hampton Roads	Globex International Group	Katten Muchin Rosenman LLP
Cigna	James Doherty	GMA Electrical Corp.	Kaye Scholer, LLP
Cintas	Ed Donnery	Kieran Goodwin	Ingrid & Brendan Keag
Citi Group	Susan Druckman, Inc./Travelex	Valerie H. Grant	John H. Kedeshian
Citigroup Global Markets Inc.	Sean F.X. Dugan	Greater Jamaica Development Corp.	William B. Keena
City Center Real Estate	Carson Dunbar	David A. Green	Howard Keenan
City Waste Services of New York, Inc.	E & J Gallo Winery	David and Alan Greene Foundation, Inc.	George A. Kellner
Cives Steel Co.	East Coast Power & Gas, LLC	H & L Sokoloff	William Kelly
Civetta Cousins JV, LLC	Eaton Electric, Inc.	Hampton Roads Shipping Association	Kennedy International Management, Co., Inc.
James F. Clark	EC Power & Gas	Hapag Lloyd (America) Inc.	Karen Keogh
Joseph P. Clayton	Anastasia Economos	Andrew C. Hartzell, Jr.	Klear Electrical Corp.
Clinical Delivery Systems, Inc.	Electric Distributors Incorporated	Have A Heart Foundation	Knoll
CMS Electrical Services	Ellana Inc.	HDLC Architectural Lighting Design	William Kourakos
Terri Coffel	Lorraine Ellis-Jordan	Health Republic Insurance of New York	Rae M. Krelitz
Comfort Air & Piping	Anne K. Embry	Lonnie Helfand	Kriss & Feuerstein, LLP
Comprehensive Professional Systems, Inc.	Empire State Development	Nicola Heryet	Dr. Irina Kryun
Paul Compton	Enobrac Plumbing, Inc.	Karen Hierman	Josh Kuriloff
Construction Estimating Institute	Environmental Building Solutions	Hirani Engineering & Land Surveying, P.C.	Laborers Easter Region Organizing Fund
Continental Guest Services Corp.	ER Barrett, Inc.	Michael Hodin	Brian Leary
Stephen Coogan	Essex Cement Company, LLC	Hoffmann Architects	Andrew Lee
Cook Maran & Associates	Executive Sports Group, Inc.	Hoffmaster Group, Inc.	Li Greci's Staaten
Barbara Ann Cook	Exotic Gourmet Corp	Aaron Hollander	Lifestyles for the Disabled
Frank T. Cooney	Facility Solutions Group	Homestead Wealth Management	Lilker Associates
James Corso	John Fagan	Peter Hornecker	Linden Alschuler & Kaplan, Inc. Public Relations
Martin and Kathleen Cottingham	Matthew Fairley	Howard Rabin, P.C.	Lloyd's America, Inc.
Council for Airport Opportunities, Inc.	Faithful & Gould	Brian Hoyt	Longbotham Consulting
Ellen F. Covas	William Farrell	Liza Hunte-Dennis	Longman Lindsey
Creative Office Pavilion	Father's Day/ Mother's Day Council, Inc	Ibuss & Allan Uniform	Robert R. Lowe
Cross Management	Fidelity National Title	Iconic Mechanical Services	LRA Consulting
Harry Cucco	Fiduciary Intermediary Ltd. - FILCO	Intercontinental New York Times Square	M & R Hardware
Kenneth Cushine	Augustus B. Field, IV	Interior Move Consultants	John G. Macfarlane, III
Gil Cygler	Peter M. Finn	International Brotherhood of Teamsters, Local 456	Madison Hawk Partners
The Dads Club of Troop 1 Flushing	Forchelli, Curto, Deegan, Schwartz, Mineo & Terrana LLP	International Longshoremen's Association, Local 1809	Edward Mafoud
Helaine D'Andrea	Ford Harrison, LLP	International Longshoremen's Association, Local 824	Magical Acres
Mark Dandrea	Forsythe Plumbing & Heating Corp.	Interstate Mechanical Services, Inc.	MagnaCare
Roy K. Danischewski	Dennis Gabel	Ironbound Intermodal Industries, Inc.	The David M. Mahood Memorial Fund
Davidoff Hutcher & Citron LLP	Vincent J. Gallo	Island Architectural Woodwork Inc.	Pearl Ann & Max Marco
George A. Davidson, Esq.	Gannon Vitolo Contracting	J & S Supply Corp.	Richard H. Martin
Dr. and Mrs. Dean L. Carlson	Gap Sales, LLC	J.M. Haley	Rita Martin
Mr. & Mrs. Charles DeBenedittis	Garden State ESP, Inc.	JCS Charitable Giving Fund	Margaret Mauro
Todd DeGarmo	Seymour L. Gartenberg	JER Electric Corp.	Torey McCleskey
Del Rey & Company CPAs, LLP	General Plumbing Corporation	The Suzanne Nora Johnson and David G. Johnson Foundation	Frank and Maureen McGuire
Gary Delgado	Gensler	Judson Realty, LLC	McKissack & McKissack
Dr. Christopher Dennis	George Artz Communications	Junge & Mele, LLP	McManimon, Scotland & Baumann, LLC
Charles DiBartolo	Gerstein Fisher	Terry & Kathy Kalser	The Meehan Consulting Group
Diferro Contracting Corp.	Giachetti Plumbing	Kane Kessler, P.C.	Metropolis Group, Inc.
Loretta DiFrenza	Robert and Jennifer Gibson	Charles H. Kaplan, Esq.	Metropolitan Commercial Bank
Catherine A. Dillon	G-III Apparel Group	Matthew Karycki	Milken Carpet
Maryann & Phil DiSalvo	Gladstein, Reif & Meginniss, LLP		J.P. Miller
District Council 9, IUPAT	Global Risk and Investigative Diligence		

Major Contributors

Miric Industries, Inc.
 Monroe College
 William Montanaro
 Mosto Technologies, Inc.
 The Mufson Group
 Frank T Mullane
 John F. Mullen
 Gregory Mustoe
 Vernon Mustoe
 Mysore Nagarajo
 Nassau Candy Distributors, Inc.
 National Law Enforcement And Firefighters Children's Foundation
 Bette S. Nelson
 James Nelson
 Neptune Mechanical Inc.
 New York Cosmos
 New York SEFA- New York City
 Nicholas J. Berkey, LLC
 New Jersey Laborers Union
 Norcon Electronics, Inc.
 North Shore Business Association
 North Shore LIJ
 Novack Burnbaum Crystal, LLP
 New York/New Jersey Foreign Freight Forwarders & Brokers Association
 NYC Police Captains Endowment Association
 NYCCFC DONATIONS
 NYSUT
 Oaktree Capital Management
 Timothy O'Hara
 Daniel D. Olson
 O'Meara Charitable Foundation, Inc.
 O'Sullivan Associates Inc.
 Otterbourg, Steindler, Houston & Rosen, P.C.
 John A. Pancetti
 Parsons Services Company
 Pascap Company, Inc.
 John Paterakis
 Patheon Belknap, LLP
 Patterson Belknap Webb & Tyler
 Perfect Forms & Systems, Inc.
 Perry Cohen Carpentry
 Petretti & Associates
 Chris Petrin
 Pharos Capital Partners, LLC/Kneeland Youngblood
 Phelps Memorial Hospital
 Kevin G. Phillips
 The Plumbing Foundation of the City of New York

Joseph Pollaci
 Port Authority of NY & NJ
 Powers Global Strategies, LLC
 Primus Technologies, Corp.
 Pryor Cashman, LLP
 Quality Building Services Corp.
 Irving Quiles
 R.C. Diocese of Brooklyn
 Rab's Country Lanes
 Rampulla Associates Architects
 RAS Mechanical
 RDS Delivery Service
 Realty Advisory Board on Labor Relations, Inc.
 Rebar Steel Corp.
 Red Cap Valet Services Inc.
 Mark Reilly
 Retirees Association of DC 37
 Richmond County Savings Foundation
 Ridgewood Savings Bank
 Stephen J. Riker
 Rini Tank & Truck Services, Inc.
 Rockefeller Group Technology Solutions, Inc
 Rockmore Contracting Corp.
 Debra L. Rodgers
 Rogers Surveying PLLC
 Mark Rollins
 Rothmans
 Bryan Rowan
 Sean Rowley
 RPM Insurance Agency
 Howard A. Rubel
 Joseph B. Ryan, Jr.
 Sabre Real Estate Group
 The Safety Group LTD
 Paul Salvatore
 John Santora
 SBA Plumbing Corp.
 The Hon. Arthur M. Schack, J.S.C.
 Ann R. Scott
 The Segal Company
 Alan Seget
 \$500-\$999
 Ivan Seidenberg
 Seneca Club of Kings County
 Seyfarth Shaw LLP
 Alfred Seymour-Jones
 Sher-Del Transfer & Relocation Services
 Walter Siebecker
 David Sigman
 Sills Cummis & Gross

Site Safety, LLC
 Arthur Spector
 SPJ Properties
 John Squitieri
 Paul D. Stanton
 The Honorable Sidney H. Stein
 The Stoltz Family Charitable Fund
 William T. Sullivan
 Erik Syvertsen
 T&M Protection Resources, LLC
 Teddy Volkswagen of the Bronx
 Thea & Schoen, Inc.
 Third Avenue Mechants
 Tiger Infrastructure Partners, LLP
 TM Technology Partners
 Tompkins Mahopac Bank
 Vincent Toye
 W. James Tozer, Jr.
 Transport Workers Union, Local 100
 Tremont Electric Supply
 True North Sales
 Truist
 Tuchman, Korngold, Lippman, & Gelles, LLP
 Diane Tuffey
 TurnkeySports
 United Jewish Endowment Fund
 United NY & NJ Sandy Hook Pilots Benevolent Association
 United Seamen's Service
 United Way of Long Island
 Unity Construction Group
 Universal Protection Service
 Van Cleve Realty Capital, LLC
 Van Deusen & Associates
 Lee G. Vance
 Vectra Management Group
 Maria Venditti
 Verizon Foundation
 \$500-\$999
 Ronald Victorio, RA
 Vicus Partners, LLC
 Peter J. Volandes
 Volmar Construction
 The Vortex Group, LLC
 John and Jennifer Walsh
 Andrew F. Ward
 Ware Malcomb
 Melissa Warren
 Watkins Poultry Merchants

WB Wood
 J. Fred Weintz
 Wesco
 Whalen Construction
 The Williams Capital Group
 Anne and Paula Williams
 Kelvin M Willis
 Winroc-SPI
 WSP USA Corp
 Mark S. Yagerman, , Esq.
 Andrew E. Yiannakos
 York Capital Management
 David Zaozirny
 Zetlin & De Chiara LLP
 Antonio Zumbo

We work diligently to monitor the accuracy of our donor lists.

Upon any errors or omissions, please contact Steven.Benini@Scouting.org.
 Thank you.



BOY SCOUTS
 OF AMERICA®
 GREATER NEW
 YORK COUNCILS

James E. West Endowment Contributors

Ten Mile River Museum Heritage Society: \$2,500

Dr. Eugene Berman
Dr. Karl E. Bernstein
William R. Dixon
Laurence H. Fine, Esq.
Dr. Bernard J. Lerner
William Mulrenin
Harold I. Rosenfeld
Mitchell Slepian
Ronald Stoker
William T. Sullivan
Edward C. Winters

Brooklyn Heritage Society: \$2,500

James Athanasatos
Mark Belli
Dr. Karl E. Bernstein
Steven Blasé
Bret Boone
Anthony Francis Bracciante
James F. Clark
Guy T. Conti
James Gallo
Vincent Gentile
Max W. Gurvitch
Daniel Hagevik
Dan Holt
Kenneth Hood
George Michaels
Steven A. Mirones
Stuart Nemkowitz
Sean A. Norris
Colin Pinnavaia
Michael A. Poretsky
Lori A. Romeo
Harold I. Rosenfeld
Hon. Arthur M.
Schack, J.S.C.
Glen Schneider
Alan & Joyce Smith
Paul D. Stanton
David Turner
Hon. John J. Vesey
Andrew E. Yiannakos
Shu-Shu-Gah Lodge #24



Manhattan Heritage Society: \$2,500

Patricia and Thomas Bain
Kay P. Chow
Barbara Ann and David Cook
Donald J. Cunningham
R. Glenn Hubbard
Thomas J. Kavalier
Peter D. Noris
Gregory J. Peterson
Michael A. Ross
Karen and Bob Scott
John P. Ward
Mark B. Weisburger
Hon. Gordon J. Whiting

Staten Island Heritage Society: \$2,500

Carolyn Birstler
George N. Callas
Jason Callas
Steve Coppola
Rita and Martin H. Eisenberg
John E. Franzreb, III

Brenda Anne Gazinski
Charles M. Greinsky
Mr. & Mrs. Francis J. Harty
Jane M. Lyons
Mr. & Mrs. Terrence C. McCormick
William Mirabello
Radames Montero
Hon. William L. Murphy
Gregory L. Mustoe
Frank Paolino
Martin D. Poller
Robert John Wodarski
Thomas R. Zablocki

Queens Heritage Society: \$2,500

Ronny S. Albuja
Steven Benini
Gordon Bennett
Joseph Bradley
Bruce E. Cobern
Richard Cordes
William and Patty Kiernan
Daniel Olson
Eddy Petersen
Joseph Schiltz

Patrick and Kathy
Streffacio
Anthony Zalak
Henry and Patricia
Zalak

James E. West Silver Member Level: \$5,000

William F. Aldinger
Steven Benini
Nicholas J. Bouras
Sam J. Bouras
Anthony Francis Bracciante
Vincent Gentile
Mr. and Mrs. Francis J. Harty
Thomas J. Moran
Peter D. Nelson
Eddy Petersen
Harold I. Rosenfeld
William T. Sullivan
Max W. Gurvitch
Hon. Gordon Whiting
Andrew E. Yiannakos
Thomas R. Zablocki
Anthony H. Zalak

James E. West Endowment Contributors

James E. West Gold

Member Level: \$10,000

Anthony Francis Bracciante
Bruce E. Cobern
Richard Stolz

James E. West Diamond

Member Level: \$15,000

Paulette & Dan Gasparo

1910 Society Ernest Thompson Seton Member Level: \$25,000

Joseph Bradley
Margot Bogert
Jeremiah H. Creedon
The Dr. Adele V. Deckinger Family Foundation
Gary Segal
Eugene J. Gottesman
William M. Kearns
Francis McAllister
Peter D. Noris
Donald E. Procknow
W. James Raleigh
Donald M. Reynolds
The Rice Family
Coleman & Carol Ross
Karen & Bob Scott
David V. Shields
Andrew C. Taylor
Mark B. Weisburger
Omer S.J. Williams, Esq.
Edward C. Winters

1910 Society Daniel Carter Beard Member Level: \$100,000 and up

Patricia & Thomas Bain
John A. Catsimatidis
E. Gerald Corrigan
Elaine Dooman
Adele Faloon
God Bless America Fund
Alan C. Greenberg
Ellen R. Harris
Thomas J. Kavalier
Dorothy B. Kraft
John F. McGillicuddy

John & Anne Oros
The Reeves Foundation
Barbara Thompson Slater
Oscar Stanley
Robert K. Steel
John C. Whitehead

James E. West Bronze Member Level: \$1,000

Robert Adamo
John C. Adams
Virginia Akhoury
Ronny S. Albuja
William F. Aldinger
Richard B. Aliperti
Ruth P. Allsup
Mark Amatrucola
Lawrence Ambrosino
Judith Anastasio
Robert T. Anderson
Barry Anfang
Aquehongian Lodge, Order of the Arrow
Armienti, DeBellis & Whiten, LLP
Gregory L. Armstrong
Barbara Ashman
James Athanasatos
Lawrence T. Babbio, Jr.
Patricia Y. Bain
Thomas S. Bain
Jack Banov
David Bell
Mark Belli
Steven Benini
Frank A. Bennack, Jr.
Robert J. Bennett
Gordon Bennett
James M. Benson
Eugene Berman, D.D.S.
Dr. Karl E. Bernstein
George M. Bethune
John H. Biggs
Carolyn Birstler
W. David Bisceglia
Steven A. Blasé
Bill Blass
Chris W. Bodine
Margot Bogert
Bret Boone

George K. Borkow
Nicholas Bouras
Sam Bouras
John Bowers
Shawn E. Bowman
Alfred Bracciante
Anthony Francis Bracciante
Joseph Bradley
Hon. Peter J. Brennan
Terence Brennan
Robert G. Britz
Edward F. Brockway
Anthony L. Brown, Jr.
Brooklyn Heritage Society
Rodolfo C. Bryce
Mark Buller
Ann Marie Bushell
Maurice C. Byan
George N. Callas
Jason Callas
Basil Capetanakis
James A. Capo
Richard C. Capone
Hon. Hugh L. Carey
Phillip J. Carroll
Michael G. Carey
Peter Castellana, Jr.
John A. Catsimatidis
John A. Cavanagh
Clarence P. Cazalot,
August Ceradini, Jr.
Enzo Cerra
Paul R. Charron
Dit F. Cheung
Kay P. Chow
Richard Chow
Martin J. Cicco
James F. Clark
Bruce E. Cobern
William H. Cohen
Vito J. Colaprico
David A. Coleman
Guy T. Conti
Barbara Ann Cook
David Cook
Marvin Cooper
Steve Coppola
Richard Cordes
E. Gerald Corrigan

Jon Corzine
Theodore J.G. Cotter, Esq.
Jeremiah H. Creedon
Donald J. Cunningham
Nicholas D'Agostino, Jr.
Daniel Carter Beard
Ralph Darian
Nickolas Davatzes
Danny L. Davis
The Dr. Adele V. Deckinger Family Foundation
The Dr. E. Lawrence Deckinger Family Foundation, Inc.
Ralph DeFalco
Louis A. DeMartino
Anthony J. DiBrita, PE
William R. Dixon
Marie O. Donath
Daniel M. Donovan, Jr.
R. Gordon Douglas, M.D.
John D. Dowd
Ethan V. Draddy
Brian E. Dugan
Howard F. Dunn
Douglas Durst
James M. Duryea
Martin H. Eisenberg
Rita Eisenberg
Edward Emma
Employees of New York Life Insurance Co.
Ernest Esposito
John P. Esposito
Andrew Ewanitz
Michael Fascitelli
Lawrence H. Fine, Esq.
David L. Fisher
Joseph Flaherty
Thorleif H. Floystad
Michael Fogarty
Anthony P. Foglio
Walter Forst
John E. Franzreb, III
Joel Friedman
Richard S. Fuld, Jr.
Douglas C. Fullman
Vertella S. Gadsden
James Gallo
Lorrie Gallo
Matthew Gallo

James E. West Endowment Contributors

Theodore R. Gamble, Jr.
Daniel R. Gasparo
Paulette Gasparo
Dennis Gaynor
Brenda Gazinski
Theodore R. Geipel
Timothy F. Geithner
Vincent Gentile
Kathleen Gerla
Jurgen H. Giesbert
David A. Gingras
Norman Ginsberg
Pearl F. Ginsberg
Peter J. Gioia
Daniel S. Glaser
God Bless America Fund
Nicholas Goldrosen
Eugene J. Gottesman
Donald C. Green
Alan C. Greenberg
Prof. Howard Greenberger
Michael Greene
Charles M. Greinsky
Guardian Service Ind.
Max W. Gurvitch
Jack Gutman
Daniel Hagevik
Donald Hamm
John Harling
Carla A. Harris
Ellen R. Harris
Gene Hart
Ted Hartley
Betty Hart
Francis J. Hart
Susan L. Hayes
Marjory Healey
Leopold Hedbavny, Jr.
Maureen A. Henegan
John M. Hennessy
James Herbert
Mary Herbert
Joy Hertel
David Hill
R. Craig Hoenshell
Jonathan M. Hoff
Daniel Holt
Kenneth Hood
Peter Desmond M. Hopkins

Gary S. Horan, FACHE
Dean Glenn Hubbard
Dieter Huckstein
Robert Iger
Hon. Vincent Ignizio
Constantine Lordanou
Lance Isham
Jack P. Jackson
Allan R. Johnson
Deacon Herbert Jones
Thomas W. Jones
Eugene S. Kahn
Dennis P. Kane
Karen L. Katen
Arthur H. Katz
James C. Kautz
Thomas J. Kavalier, Esq.
William M. Kearns, Jr.
Gerald C. Keegan
Catherine R. Kinney
Tom N. Kellogg
William Kiernan
John Kirst
Albert S. Kobe
Mordecai Konowitz
David Kotheimer
Dorothy B. Kraft
Peter S. Kraus
Henry R. Kravis
Frederick B. Krom, III
Edward Kruzik
Monique A. Kusick
Conrad E. Lake
Benjamin V. Lambert
Hon. Ralph J. Lamberti
Lou Lamoriello
J. Smith Lanier, II
Rev. Peter Larom
Richard M. Larrabee
Max LeFebvre
Faye Lehman
Bernard J. Lerner
Arthur W. Leudesdorf
Anthony G. Limone
Arthur Liman
Rachel Lipari
Norman C.T. Liu
Joseph Longo

Frank Lourenso
Cliff Luster
Arthur Lyons
Jane M. Lyons
Alain Maca
John G. Macfarlane, III
John J. Mack
Bob Madsen
Bob Maeurer
Delilah Mahon
Michael Mahon
David Maldonado
Michael G. Mann
Man-A-Hattin Lodge #82
Hon. Albert V. Maniscalco
Fred R. Marcon
Richard H. Martin
Richard G. Mason, Esq.
James P. Mastrian
Kimball P. Mayer
Frank McAllister
Angus L. McBryde, Jr.
Elizabeth McCaul
Terrence C. McCormick
William H. McDavid
William J. McDonough
John F. McGillicuddy
Michael E. McMahon
Sean McManus
G. Allen Mebane, IV
Terence S. Meehan
Martin L. Meltz, PhD
Sen. Robert Menendez
George Michaels
William Mirabello
Arthur J. Mirante
Steven A. Mirones
Radames Montero
Emil M. Moos
Thomas J. Moran
Colleen M. Morrissey
Niland Mortimer
Alan R. Mullally
Frank R. Mullane
William Mulrenin
Hon. William L. Murphy
John J. Murphy
Peter J. Murphy

Robert M. Murphy
James I. Nederlander
Peter D. Nelson
Stuart Nemkowitz
New York Deacons-
Episcopal Church
Frank N. Newman
Paul Norden
Peter D. Noris
Sean A. Norris
Hon. James Oddo
Lawrence O'Donnell
Robert J. O'Donnell
Hon. Jerome X. O'Donovan
Alan Okada
Thomas H. O'Leary
Daniel D. Olson
Rein J. Olvet
Timothy O'Neill
John Oros
Dr. José M. Ortiz
Richard de J. Osborne
Deryck A. Palmer, Esq.
Frank Paolino
Herbert Pardes, M.D.
Jeffrey M. Peek
Michael A. Pelucco
Ronald O. Perelman
Vincent J. Peters
Eddy Petersen
Gregory J. Peterson
Jack Peterson
Myron A. Phillips
Anthony L. Pinnavaia, Jr.
Colin Pinnavaia
Ian M. Pinnavaia
Maura Pinnavaia
Thomas L. Piper, III
Michael Plaut
Joseph J. Plumeri
Martin D. Poller
Ruth Ann Poller
Michael A. Poretsky
Hon. Charles Posner
Donald E. Procknow
Ralph Putnam
Ray Quartararo
Queens Heritage Society
W. James Raleigh

James E. West Endowment Contributors

J. E. Reeves, Jr.
Edward Regis
William R. Reid
Tom Reilly
Gerald Reimer
Donald M. Reynolds
Paul F. Richardson
David H. Risueno
Bruce F. Roberts
James D. Robinson, III
Joe Roby
Kevin B. Rollins
Lori A. Romeo
Carl Rosen
Harold I. Rosenfeld
Carol Ross
Coleman Ross
Michael A. Ross
John A. Roth
Thomas Rubino
Richard M. Ruffino
Joseph W. Ryan
William I. Ryan, Jr.
Peter R. Sachse
Joseph Sargent, CLU
John Sammon
Richard Sasso
Hon. Arthur M. Schack, J.S.C.
Louis & Theresa Scherer
S. Gary Schiller
Joseph Schiltz
Glen Schneider
Jonathan M. Schofield

Gladys Schweiger
Frederick M. Schweizer
Joseph R. Sciacca
Anthony A. Scioscia
Bernard L. Scott
Robert G. & Karen M. Scott
Andrew Selowentchich
Ernest Thompson Seton
Jim Shaughnessy
David V. Shields
Ship 272
Shu-Shu-Gah Lodge #24
Muriel Siebert
Stephen B. Siegel
Richard Silverman
John J. Simone
Dr. David B. Skinner
Christopher Paul Slattery
Mitchell Slepian
Virginia Sloane
Earl Sluss
Alan & Joyce Smith
Neil Smith
Alfred E. Smith, IV
John Sollazzo
Andrew Sommer
Jerry Spampinato
Dr. Alexander W. Spears
Dixon Speas
Manette H. Speas
William T. Speck, M.D.
John Paul Spero
Joseph E. Spinnato, Esq.

Paul D. Stanton
Staten Island Heritage Society
Hon. Robert K. Steel
Sy Steinberg
Eric A. Sterling
Henry J. Stern
William C. Stivers
Ronald W. Stoker
Richard Stolz
Kathy Streffacio
Patrick Streffacio
Suanhacky Lodge #49
William T. Sullivan
Arthur A. Surin
David E. Tate
Andrew C. Taylor
Andre Testa, Sr.
John A. Thain
Adam D. Tihany
Thomas R. Tizzio
TMR Alumni Association
Lawrence J. Toal
Anthony J. Torcasio
Gloria & Nicholas Torrenzano
Alair Townsend
Victoria G. Traube
Troop 106 Queens Council
Fred & Mary Trump
Robert R. Turner
William H. Turner
Hon. John J. Vesey
Robert Viggiano
Walter Vines

Mario P. Vitale
Alex Wallau
John F. Walsh
Christopher Ward
John Ward
Mark B. Weisburger
Gary Wendlandt
Paul R. Westerkamp
John C. Whitehead
Marc Whiten
Hon. Gordon J. Whiting
Omer S.J. Williams, Esq.
Debra Wilson-Matthews
Edward C. Winters
Lou Winters
Robert John Wodarski
John Wren
Jerry Yang
Edward Yelon
Andrew E. Yiannakos
Thomas R. Zablocki
Noel K. Zakin
Anthony H. Zalak
Henry F. Zalak
Patricia Zalak
Jeff Zucker
Allan Zwemer

James E. West Fellows have made a minimum contribution of \$1,000 to the Council's Permanent Endowment Fund. These dollars are held for the perpetual benefit of Scouting in New York City.



»» How Do You Lead?

"My grandfather has Alzheimer's and began wandering at night, causing a number of accidents. I created a simple system that could detect his wanderings and alert an app on my Aunt's mobile phone. Indeed my Scouting experience instilled in me a love of cheerful service that has translated into my own desire to unconditionally help others."

– Kenneth Shinozuka, Eagle Scout, Troop 729, Manhattan



NYC Scouting and Exploring

Creating Leaders
Changing Futures



MISSION

The Greater New York Councils, Boy Scouts of America prepares young people to make ethical choices over their lifetimes by instilling in them the values of the Scout Oath and Law.

SCOUT OATH

On my honor I will do my best
To do my duty to God and my country
and to obey the Scout Law;
To help other people at all times;
To keep myself physically strong,
mentally awake, and morally straight.

SCOUT LAW

A Scout is trustworthy,
loyal, helpful, friendly,
courteous, kind,
obedient, cheerful,
thrifty, brave, clean,
and reverent.



BOY SCOUTS
OF AMERICA®
GREATER NEW
YORK COUNCILS


Greater New York Councils, Boy Scouts of America


350 Fifth Avenue, Suite 7820 • New York, NY 10118
TEL: 212-242-1100 • FAX: 212-242-3630

 facebook.com/BoyScoutsGNYC

 [@BoyScoutsGNYC](https://twitter.com/BoyScoutsGNYC)

 youtube.com/user/ScoutingNYC

 For Eagle Scout Alumni:
www.bsa-gnyc.org/Eaglelinkedln
and for Members of the Greater New York Councils:
www.bsa-gnyc.org/GNYClinedln

 To locate a Scout program in your community:
www.beascout.scouting.org

>> www.bsa-gnyc.org

